

Courtesy Of Don Boonstra Of 2% Realty Pro

\$473,000 - 16208 87 Avenue, Edmonton

MLS® #E4463175

\$473,000

4 Bedroom, 1.50 Bathroom, 1,091 sqft
Single Family on 0.00 Acres

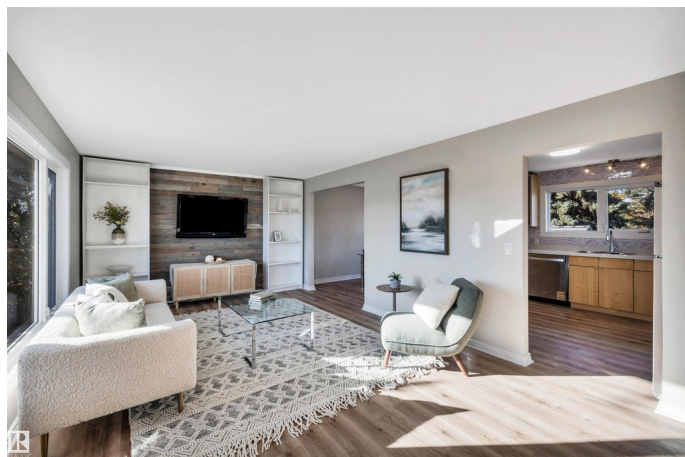
Meadowlark Park (Edmonton), Edmonton, AB

Welcome to this beautifully renovated 4-level split home with 2,080 ft² of finished living space in the mature Meadowlark Park neighborhood close to schools, shopping, and downtown! This bright and spacious home offers 4 bedrooms, a den, 1.5 baths, and upgraded vinyl windows that fill every room with natural light. Enjoy brand-new vinyl plank flooring in the living areas and cozy new carpet in the bedrooms and basement rec room. Huge back entry with shelving and laundry. Newer insulation, siding, soffits, fascia, and windows makes this home move in ready! The large 54' x 110' lot provides plenty of space for outdoor living, gardening, or future development. A new LRT station under construction just 3 blocks away will make commuting a breeze. Move-in ready and perfectly located—this home offers comfort, convenience, and value in one exceptional package! Some photos have been virtually staged.

Built in 1961

Essential Information

MLS® #	E4463175
Price	\$473,000
Lease Rate	\$17
Bedrooms	4



Bathrooms	1.50
Full Baths	1
Half Baths	1
Square Footage	1,091
Acres	0.00
Year Built	1961
Type	Single Family
Sub-Type	Detached Single Family
Style	4 Level Split
Status	Active

Community Information

Address	16208 87 Avenue
Area	Edmonton
Subdivision	Meadowlark Park (Edmonton)
City	Edmonton
County	ALBERTA
Province	AB
Postal Code	T5R 4G9

Amenities

Amenities	Carbon Monoxide Detectors, Detectors Smoke, Front Porch, Hot Water Natural Gas, Parking-Extra, Vinyl Windows, Natural Gas BBQ Hookup
Parking	Over Sized, Single Garage Detached

Interior

Appliances	Dishwasher-Built-In, Dryer, Garage Control, Microwave Hood Fan, Refrigerator, Storage Shed, Stove-Electric, Washer
Heating	Forced Air-1, Natural Gas
Stories	4
Has Basement	Yes
Basement	Full, Finished

Exterior

Exterior	Wood, Vinyl
Exterior Features	Back Lane, Fenced, Fruit Trees/Shrubs, Landscaped, Playground Nearby, Public Swimming Pool, Schools, Shopping Nearby
Roof	Asphalt Shingles
Construction	Wood, Vinyl

Foundation Concrete Perimeter

Additional Information

Date Listed October 23rd, 2025

Days on Market 2

Zoning Zone 22

DATA IS DEEMED RELIABLE BUT IS NOT GUARANTEED ACCURATE BY THE REALTORS® ASSOCIATION OF EDMONTON. COPYRIGHT 2025 BY THE REALTORS® ASSOCIATION OF EDMONTON. ALL RIGHTS RESERVED. Trademarks are owned or controlled by the Canadian Real Estate Association (CREA) and identify real estate professionals who are members of CREA (REALTOR®, REALTORS®) and/or the quality of services they provide (MLS®, Multiple Listing Service®)

Listing information last updated on October 25th, 2025 at 6:02pm MDT