

\$484,000 - 3120 Paisley Road, Edmonton

MLS® #E4460931

\$484,000

4 Bedroom, 3.50 Bathroom, 1,493 sqft

Single Family on 0.00 Acres

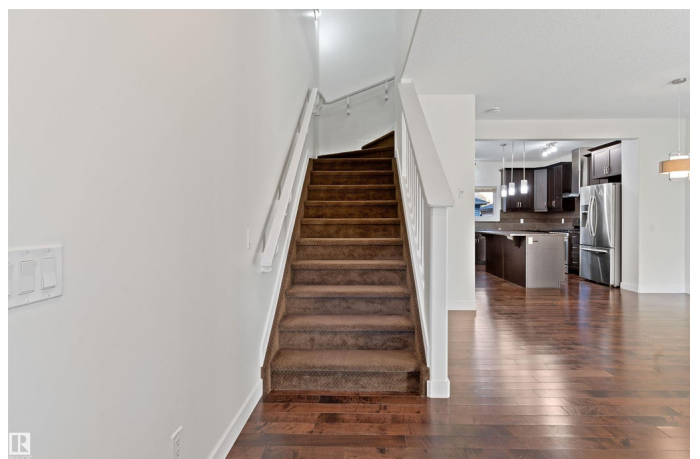
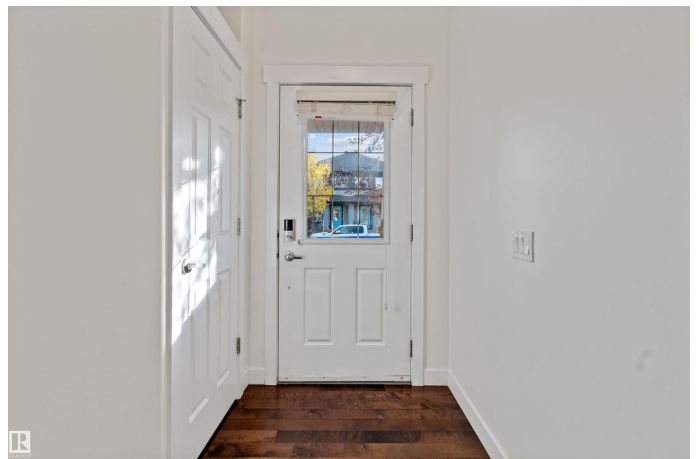
Paisley, Edmonton, AB

Charming 2-Storey Home in Sought-After Paisley! Step into this beautifully maintained 4-bedroom 4-Bath home with a double detached garage, perfectly located in the family-friendly community of Paisley. Built in 2014, Daytona home features classic maple hardwood flooring, an upgraded granite kitchen with premium appliances, and a welcoming bay window that floods the space with natural light. The main floor offers a bright open concept layout, perfect for entertaining, with a stylish kitchen, dining area, and cozy living space. Upstairs, you'll find three spacious bedrooms, including a primary suite with a 4pc ensuite and walk-in closet, plus an additional 4 pc full bath and convenient upper laundry. Finished basement(532SQFT) with a spacious bedroom, Recroom & 3pc bath. Outside, enjoy a private, covered deck, fenced backyard, and landscaped yard—ideal for relaxing evenings or summer BBQs. Located in a quiet, mature neighbourhood, Paisley offers parks and quick access to amenities.

Built in 2014

Essential Information

MLS® #	E4460931
Price	\$484,000
Bedrooms	4



Bathrooms	3.50
Full Baths	3
Half Baths	1
Square Footage	1,493
Acres	0.00
Year Built	2014
Type	Single Family
Sub-Type	Detached Single Family
Style	2 Storey
Status	Active

Community Information

Address	3120 Paisley Road
Area	Edmonton
Subdivision	Paisley
City	Edmonton
County	ALBERTA
Province	AB
Postal Code	T6W 2W8

Amenities

Amenities	Carbon Monoxide Detectors, Detectors Smoke, No Animal Home
Parking	Double Garage Detached

Interior

Interior Features	ensuite bathroom
Appliances	Dishwasher-Built-In, Dryer, Hood Fan, Oven-Microwave, Refrigerator, Stove-Countertop Gas
Heating	Forced Air-1, Natural Gas
Stories	3
Has Basement	Yes
Basement	Full, Finished

Exterior

Exterior	Wood, Vinyl
Exterior Features	Fenced, Landscaped, Playground Nearby, Public Transportation, Schools, Shopping Nearby
Roof	Asphalt Shingles
Construction	Wood, Vinyl

Foundation Concrete Perimeter

Additional Information

Date Listed October 5th, 2025

Days on Market 31

Zoning Zone 55

DATA IS DEEMED RELIABLE BUT IS NOT GUARANTEED ACCURATE BY THE REALTORS® ASSOCIATION OF EDMONTON. COPYRIGHT 2025 BY THE REALTORS® ASSOCIATION OF EDMONTON. ALL RIGHTS RESERVED. Trademarks are owned or controlled by the Canadian Real Estate Association (CREA) and identify real estate professionals who are members of CREA (REALTOR®, REALTORS®) and/or the quality of services they provide (MLS®, Multiple Listing Service®)

Listing information last updated on November 5th, 2025 at 3:02am MST