

\$359,900 - 105 2612 109 Street, Edmonton

MLS® #E4449131

\$359,900

2 Bedroom, 2.00 Bathroom, 1,002 sqft

Condo / Townhouse on 0.00 Acres

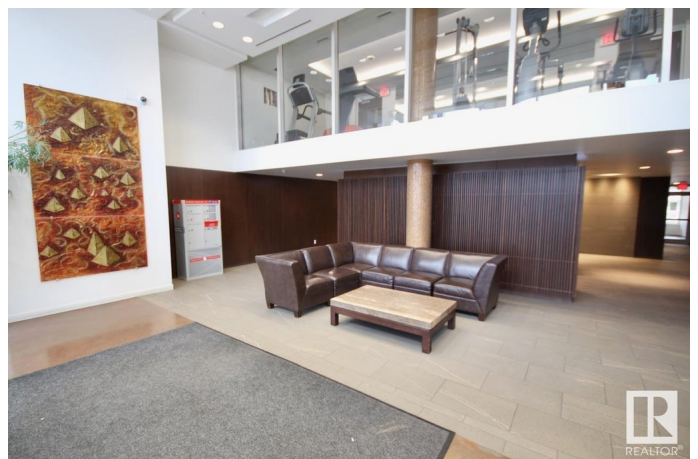
Ermineskin, Edmonton, AB

MODERN LUXURY 2 BED 2 BATH CONDO WITH 2 TITLED UNDERGROUND PARKING STALLS & TITLED STORAGE UNIT! STEPS TO CENTURY PARK LRT! This upgraded main floor unit boasts massive windows, loads of natural light, gas range, granite counter tops, stainless steel appliances, modern finishes, open concept, 9 ft ceilings, 2 large bedrooms, 2 full bathrooms (including a 5pc spa like ensuite with soaker tub), in-suite laundry, AND AN OVER 900SQFT PATIO! This is truly a one of a kind unit! It's not often you can grow a garden, entertain, and bbq on the patio of your very own condo! This is a solid **CONCRETE CONSTRUCTION** building that has many amenities including an exercise room! This **LOCATION** is perfect unit for easy access to all amenities and easy commute to downtown, U of A or any of the LRT stops! **ALL UTILITIES, INTERNET and AMENITIES INCLUDED WITHIN THE CONDO FEE!**

Built in 2009

Essential Information

MLS® #	E4449131
Price	\$359,900
Bedrooms	2
Bathrooms	2.00
Full Baths	2



Square Footage	1,002
Acres	0.00
Year Built	2009
Type	Condo / Townhouse
Sub-Type	Lowrise Apartment
Style	Single Level Apartment
Status	Active

Community Information

Address	105 2612 109 Street
Area	Edmonton
Subdivision	Ermineskin
City	Edmonton
County	ALBERTA
Province	AB
Postal Code	T6J 3T1

Amenities

Amenities	Ceiling 9 ft., Deck, Exercise Room, No Animal Home, No Smoking Home, Parking-Visitor, Storage Cage
Parking	Heated, Underground

Interior

Interior Features	ensuite bathroom
Appliances	Dishwasher-Built-In, Hood Fan, Oven-Built-In, Oven-Microwave, Refrigerator, Stacked Washer/Dryer, Stove-Gas
Heating	Fan Coil, Natural Gas
Fireplace	Yes
Fireplaces	Insert
# of Stories	8
Stories	1
Has Basement	Yes
Basement	None, No Basement

Exterior

Exterior	Concrete, Brick
Exterior Features	Landscaped, Public Transportation, Schools, Shopping Nearby
Roof	Tar & Gravel
Construction	Concrete, Brick

Foundation Concrete Perimeter

Additional Information

Date Listed July 21st, 2025
Days on Market 8
Zoning Zone 16
Condo Fee \$785

DATA IS DEEMED RELIABLE BUT IS NOT GUARANTEED ACCURATE BY THE REALTORS® ASSOCIATION OF EDMONTON. COPYRIGHT 2025 BY THE REALTORS® ASSOCIATION OF EDMONTON. ALL RIGHTS RESERVED.Trademarks are owned or controlled by the Canadian Real Estate Association (CREA) and identify real estate professionals who are members of CREA (REALTOR®, REALTORS®) and/or the quality of services they provide (MLS®, Multiple Listing Service®)
Listing information last updated on July 29th, 2025 at 4:18pm MDT