

## \$215,000 - 504 9945 167 Street, Edmonton

MLS® #E4445838

**\$215,000**

2 Bedroom, 2.00 Bathroom, 932 sqft

Condo / Townhouse on 0.00 Acres

Glenwood (Edmonton), Edmonton, AB

Get ready to be impressed by the care, quality & good vibes in this open floor plan 2 bedroom, 2 bathroom Century Ridge condo. Top Floor + Corner unit too – so nice not to hear anyone walking above you and sunshine from 2 directions and wonderful cross breeze created by opening opposing windows! Convenient West End location close to everything. Did I mention there is parking underground for 2 cars in the tandem length double titled stall? Spacious balcony is a great place to sit and catch some sun or enjoy the birds eye view from the 5th floor. The layout is really great with an open Great Room plan that is ideal for entertaining making everyone, including the cook, part of the conversation. Great storage incl large pantry + granite counter tops, stainless steel appliances & remodelled bathrooms! You are going to love living here...the bedrooms are spacious & the primary bedroom has a walk through closet to the beautiful ensuite. Laundry room in suite is perfectly set up. Move in condition!

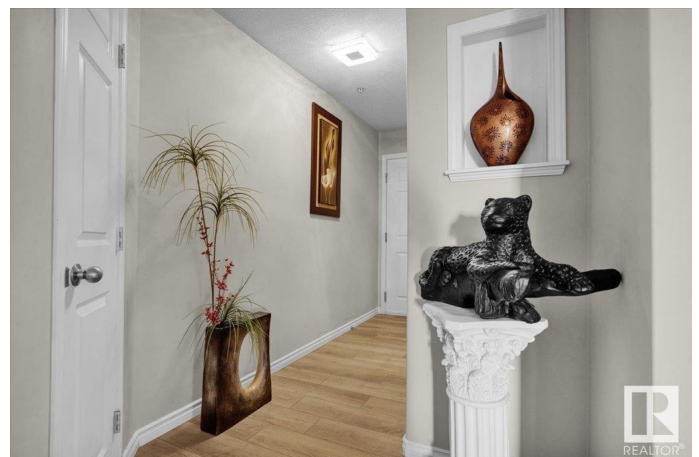
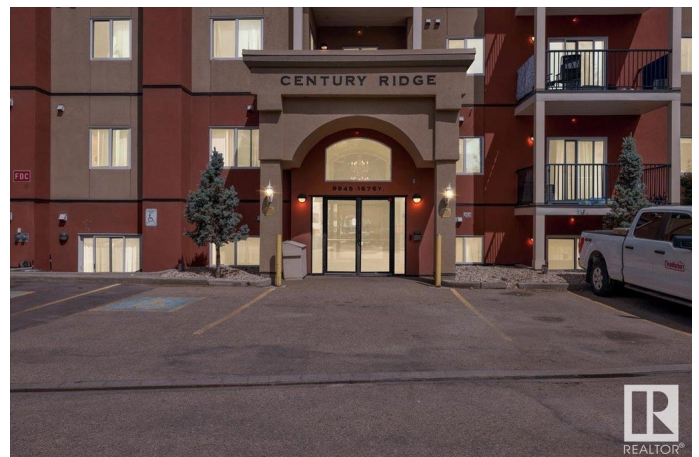
Built in 2007

### Essential Information

MLS® # E4445838

Price \$215,000

Bedrooms 2



Bathrooms	2.00
Full Baths	2
Square Footage	932
Acres	0.00
Year Built	2007
Type	Condo / Townhouse
Sub-Type	Lowrise Apartment
Style	Single Level Apartment
Status	Active

### Community Information

Address	504 9945 167 Street
Area	Edmonton
Subdivision	Glenwood (Edmonton)
City	Edmonton
County	ALBERTA
Province	AB
Postal Code	T5P 0K5

### Amenities

Amenities	Intercom, No Animal Home, No Smoking Home, Parking-Visitor, Secured Parking, Security Door, Sprinkler System-Fire, Storage-In-Suite, See Remarks
Parking Spaces	2
Parking	Double Indoor, Heated, Stall, Tandem, Underground

### Interior

Interior Features	ensuite bathroom
Appliances	Dishwasher-Built-In, Dryer, Microwave Hood Fan, Refrigerator, Stove-Electric, Washer, Window Coverings
Heating	Baseboard, Hot Water, Natural Gas
# of Stories	5
Stories	1
Has Basement	Yes
Basement	None, No Basement

### Exterior

Exterior	Wood, Stucco
Exterior Features	Landscaped, Picnic Area, Playground Nearby, Public Transportation,

Schools, Shopping Nearby, See Remarks

Roof	Flat
Construction	Wood, Stucco
Foundation	Concrete Perimeter

### School Information

Elementary	Aleda Patterson K-3
Middle	Alex Janvier 4-9
High	Jasper Place 10-12

### Additional Information

Date Listed	July 3rd, 2025
Days on Market	66
Zoning	Zone 22
Condo Fee	\$550

DATA IS DEEMED RELIABLE BUT IS NOT GUARANTEED ACCURATE BY THE REALTORS® ASSOCIATION OF EDMONTON. COPYRIGHT 2025 BY THE REALTORS® ASSOCIATION OF EDMONTON. ALL RIGHTS RESERVED. Trademarks are owned or controlled by the Canadian Real Estate Association (CREA) and identify real estate professionals who are members of CREA (REALTOR®, REALTORS®) and/or the quality of services they provide (MLS®, Multiple Listing Service®)

Listing information last updated on September 7th, 2025 at 5:47pm MDT