

## \$479,800 - 1205 162 Street, Edmonton

MLS® #E4445169

**\$479,800**

4 Bedroom, 3.50 Bathroom, 1,397 sqft

Single Family on 0.00 Acres

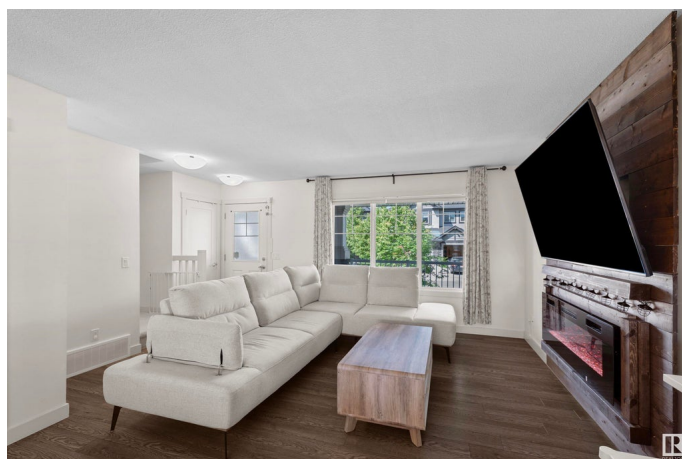
Glenridding Heights, Edmonton, AB

Stunning 1397 sqft half-duplex in Glenridding Heights! NO CONDO FEES! This beautifully maintained home features 4 beds, 3.5 baths, FINISHED basement and AC! Enjoy a bright main floor with living room, modern white kitchen with stainless steel appliances, granite counters, and open dining space and half bath. Upper level has versatile BONUS area, laundry, master bedroom with 4pc ensuite and large walk-in closets and two additional bedrooms with 2nd full bath. The professionally finished basement adds a family room with bar, 4th bedroom, and 3rd full bath. Fenced yard w/ fruit-bearing plants (cherry, grape, blackberry) and detached double garage. Walking distance to schools, public transit, near Anthony Henday, shops & parks. Friendly neighbourhood! Come see your new home!

Built in 2013

### Essential Information

MLS® #	E4445169
Price	\$479,800
Bedrooms	4
Bathrooms	3.50
Full Baths	3
Half Baths	1
Square Footage	1,397



Acres	0.00
Year Built	2013
Type	Single Family
Sub-Type	Half Duplex
Style	2 Storey
Status	Active

### Community Information

Address	1205 162 Street
Area	Edmonton
Subdivision	Glenridding Heights
City	Edmonton
County	ALBERTA
Province	AB
Postal Code	T6W 2L1

### Amenities

Amenities	Deck, No Animal Home, No Smoking Home
Parking	Double Garage Detached

### Interior

Interior Features	ensuite bathroom
Appliances	Air Conditioning-Central, Dishwasher-Built-In, Dryer, Hood Fan, Refrigerator, Stove-Electric, Washer, Window Coverings
Heating	Forced Air-1, Natural Gas
Stories	3
Has Basement	Yes
Basement	Full, Finished

### Exterior

Exterior	Wood, Stone, Vinyl
Exterior Features	Back Lane, Fenced, Golf Nearby, Landscaped, Playground Nearby, Public Transportation, Schools, Shopping Nearby
Roof	Asphalt Shingles
Construction	Wood, Stone, Vinyl
Foundation	Concrete Perimeter

### Additional Information

Date Listed	July 1st, 2025
-------------	----------------

Days on Market 8

Zoning Zone 56

DATA IS DEEMED RELIABLE BUT IS NOT GUARANTEED ACCURATE BY THE REALTORS® ASSOCIATION OF EDMONTON. COPYRIGHT 2025 BY THE REALTORS® ASSOCIATION OF EDMONTON. ALL RIGHTS RESERVED. Trademarks are owned or controlled by the Canadian Real Estate Association (CREA) and identify real estate professionals who are members of CREA (REALTOR®, REALTORS®) and/or the quality of services they provide (MLS®, Multiple Listing Service®)

Listing information last updated on July 9th, 2025 at 4:47pm MDT