

\$699,900 - 1421 Chahley Place, Edmonton

MLS® #E4444432

\$699,900

5 Bedroom, 3.50 Bathroom, 2,150 sqft

Single Family on 0.00 Acres

Cameron Heights (Edmonton), Edmonton, AB

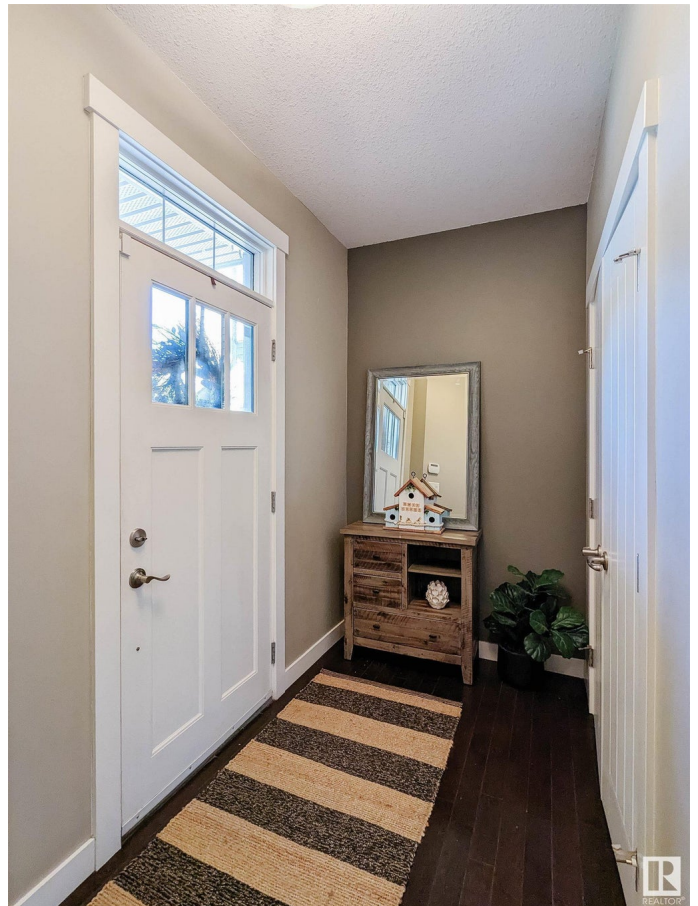
Beautiful 2-storey home in the prestigious Cameron Heights community. Designed with an open concept layout, this home is perfect for entertaining and family living. It features 5 bedrooms, bright bonus room with vaulted ceiling, den, and 3.5 bathrooms. Enjoy stylish finishes like hardwood and tile flooring, granite countertops, stainless steel appliances, plenty of cabinetry, and a corner pantry. The main floor offers a cozy family room with an eye-catching two-way stone fireplace, coffered ceiling dining nook, den, laundry/mudroom, and 2piece bath. Upstairs youâ€™™ll find a spacious bonus room, relaxing primary suite with walk-in-closet, 5piece ensuite, and sitting area, along with two more bedrooms and a 4piece bath. The fully finished basement includes a rec room, two additional bedrooms, 3piece bath, and storage. Outside, the landscaped yard features a two-tier deck and stone firepit surrounded by mature trees. Located in a quiet cul-de-sac close to parks, trails, the Henday, and Currents of Windermere.

Built in 2011

Essential Information

MLS® # E4444432

Price \$699,900



| | |
|----------------|------------------------|
| Bedrooms | 5 |
| Bathrooms | 3.50 |
| Full Baths | 3 |
| Half Baths | 1 |
| Square Footage | 2,150 |
| Acres | 0.00 |
| Year Built | 2011 |
| Type | Single Family |
| Sub-Type | Detached Single Family |
| Style | 2 Storey |
| Status | Active |

Community Information

| | |
|-------------|----------------------------|
| Address | 1421 Chahley Place |
| Area | Edmonton |
| Subdivision | Cameron Heights (Edmonton) |
| City | Edmonton |
| County | ALBERTA |
| Province | AB |
| Postal Code | T6M 0J3 |

Amenities

| | |
|----------------|-------------------------------------------------------------------------------------------|
| Amenities | Air Conditioner, Ceiling 9 ft., Deck, Exterior Walls- 2"x6", Vaulted Ceiling, See Remarks |
| Parking Spaces | 4 |
| Parking | Double Garage Attached |

Interior

| | |
|-------------------|--------------------------------------------------------------------------------------------------------------------------------------------------------------------------------------|
| Interior Features | ensuite bathroom |
| Appliances | Air Conditioning-Central, Alarm/Security System, Dishwasher-Built-In, Dryer, Garage Control, Garage Opener, Microwave Hood Fan, Refrigerator, Stove-Gas, Washer, Curtains and Blinds |
| Heating | Forced Air-1, Natural Gas |
| Fireplace | Yes |
| Fireplaces | Double Sided, Stone Facing |
| Stories | 2 |
| Has Basement | Yes |
| Basement | Full, Finished |

Exterior

| | |
|-------------------|-----------------------------------------------------------------------|
| Exterior | Wood, Stone, Vinyl |
| Exterior Features | Cul-De-Sac, Fenced, Fruit Playground Nearby, Public See Remarks |
| Roof | Asphalt Shingles |
| Construction | Wood, Stone, Vinyl |
| Foundation | Concrete Perimeter |



Additional Information

| | |
|----------------|-----------------|
| Date Listed | June 26th, 2025 |
| Days on Market | 6 |
| Zoning | Zone 20 |

DATA IS DEEMED RELIABLE BUT IS NOT GUARANTEED ACCURATE BY THE REALTORS® ASSOCIATION OF EDMONTON. COPYRIGHT 2025 BY THE REALTORS® ASSOCIATION OF EDMONTON. ALL RIGHTS RESERVED.Trademarks are owned or controlled by the Canadian Real Estate Association (CREA) and identify real estate professionals who are members of CREA (REALTOR®, REALTORS®) and/or the quality of services they provide (MLS®, Multiple Listing Service®)

Listing information last updated on July 1st, 2025 at 11:32pm MDT