

\$458,800 - 106 Sugar Maple Lane, Leduc

MLS® #E4443290

\$458,800

3 Bedroom, 2.50 Bathroom, 1,559 sqft

Single Family on 0.00 Acres

Suntree (Leduc), Leduc, AB

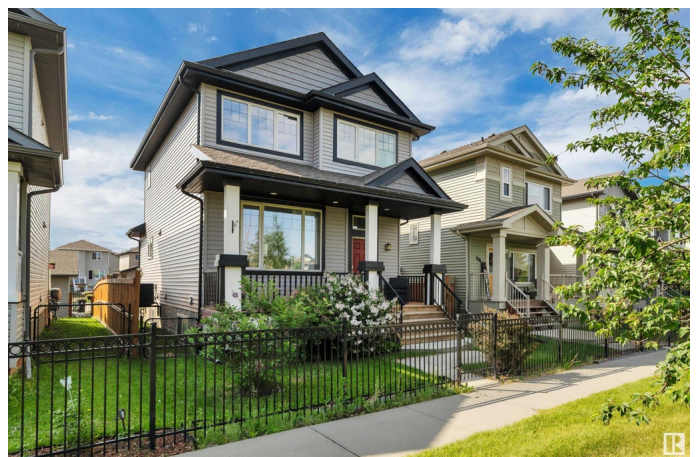
This meticulously maintained 2-story home features 3 bedrooms, 2.5 bathrooms & an unfinished basement ready for your personal touch. The open-concept main floor offers 9'™ ceilings, a cozy gas fireplace, and a stylish kitchen with granite countertops, a walk-in pantry & a natural gas BBQ hookup on the deck—perfect for entertaining indoors & out. Upgrades include custom shelving, extra exterior lighting, air conditioning, and central vac. Upstairs, the spacious primary bedroom features a large walk-in closet and an oversized shower. Enjoy outdoor living with a front deck, a large custom composite back deck & a fully fenced, landscaped yard. With no front neighbors, you can walk straight out your front door into open park & greenspace. The oversized heated garage (24'™ deep x 22'™ wide, with 8'™ door and 9'™ ceilings) is fully equipped with polyaspartic flooring, 220V power, radiant heat & attic storage—ideal for car enthusiasts, hobbyists, or extra workspace. A true turn-key home in an unbeatable location!

Built in 2014

Essential Information

MLS® # E4443290

Price \$458,800



Bedrooms	3
Bathrooms	2.50
Full Baths	2
Half Baths	1
Square Footage	1,559
Acres	0.00
Year Built	2014
Type	Single Family
Sub-Type	Detached Single Family
Style	2 Storey
Status	Active

Community Information

Address	106 Sugar Maple Lane
Area	Leduc
Subdivision	Suntree (Leduc)
City	Leduc
County	ALBERTA
Province	AB
Postal Code	T9E 0W4

Amenities

Amenities	Air Conditioner, Ceiling 9 ft., Deck, Front Porch, Vinyl Windows, See Remarks, Natural Gas BBQ Hookup
Parking	220 Volt Wiring, Double Garage Detached, Heated, Insulated, Over Sized

Interior

Interior Features	ensuite bathroom
Appliances	Dishwasher-Built-In, Dryer, Garage Control, Garage Opener, Microwave Hood Fan, Refrigerator, Stove-Electric, Vacuum Systems, Washer, Window Coverings
Heating	Forced Air-1, Natural Gas
Fireplace	Yes
Fireplaces	Corner
Stories	2
Has Basement	Yes
Basement	Full, Unfinished

Exterior

Exterior	Wood, Vinyl
Exterior Features	Airport Nearby, Backs Onto Park/Trees, Fenced, Landscaped, Park/Reserve, Picnic Area, Playground Nearby
Roof	Asphalt Shingles
Construction	Wood, Vinyl
Foundation	Concrete Perimeter

Additional Information

Date Listed	June 19th, 2025
Days on Market	12
Zoning	Zone 81

DATA IS DEEMED RELIABLE BUT IS NOT GUARANTEED ACCURATE BY THE REALTORS® ASSOCIATION OF EDMONTON. COPYRIGHT 2025 BY THE REALTORS® ASSOCIATION OF EDMONTON. ALL RIGHTS RESERVED.Trademarks are owned or controlled by the Canadian Real Estate Association (CREA) and identify real estate professionals who are members of CREA (REALTOR®, REALTORS®) and/or the quality of services they provide (MLS®, Multiple Listing Service®)

Listing information last updated on July 1st, 2025 at 2:03pm MDT