

\$474,900 - 662 Secord Boulevard, Edmonton

MLS® #E4443110

\$474,900

2 Bedroom, 2.50 Bathroom, 1,603 sqft

Single Family on 0.00 Acres

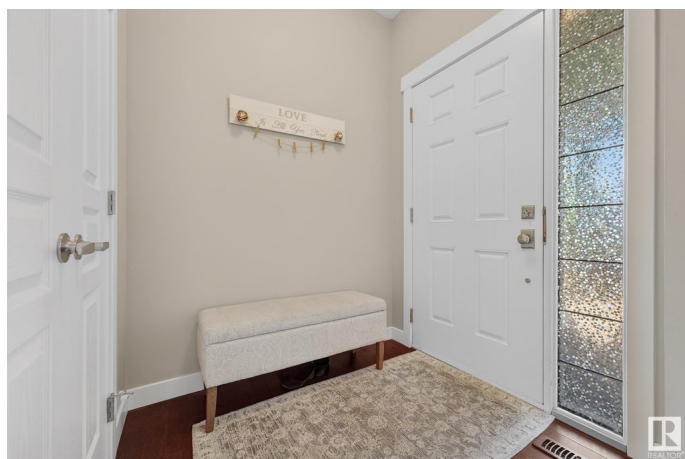
Secord, Edmonton, AB

Welcome to this beautifully maintained home in the desirable community of Secord! Step inside to find a bright & open main floor featuring a spacious kitchen, living, and dining area, perfect for everyday living & entertaining. Granite countertops run throughout the entire home, & a main floor den provides flex space for a home office or playroom. A convenient 2pc bath completes the main level. Upstairs, you'll find newly installed hardwood flooring (Feb 2025), a laundry room with storage, & a generously sized guest bed that can easily be converted into two rooms - it already includes dual closets & separate electrical! The primary suite is a true retreat, with a large WIC & a luxurious 5-piece ensuite with a soaker tub and separate shower. Enjoy summer evenings on the charming front porch or host gatherings on the large deck in the private backyard. The double garage offers ample space for both parking and storage. Close to parks, schools, public transit and other amenities!

Built in 2015

Essential Information

MLS® #	E4443110
Price	\$474,900
Bedrooms	2
Bathrooms	2.50



Full Baths	2
Half Baths	1
Square Footage	1,603
Acres	0.00
Year Built	2015
Type	Single Family
Sub-Type	Detached Single Family
Style	2 Storey
Status	Active

Community Information

Address	662 Secord Boulevard
Area	Edmonton
Subdivision	Secord
City	Edmonton
County	ALBERTA
Province	AB
Postal Code	T5T 6Z6

Amenities

Amenities	Deck, Front Porch, No Smoking Home, See Remarks
Parking	Double Garage Detached

Interior

Interior Features	ensuite bathroom
Appliances	Dishwasher-Built-In, Dryer, Garage Control, Garage Opener, Microwave Hood Fan, Refrigerator, Stove-Electric, Washer, Window Coverings
Heating	Forced Air-1, Natural Gas
Stories	2
Has Basement	Yes
Basement	Full, Unfinished

Exterior

Exterior	Wood, Vinyl
Exterior Features	Fenced, Golf Nearby, Landscaped, Playground Nearby, Public Transportation, Schools, Shopping Nearby, See Remarks
Roof	Asphalt Shingles
Construction	Wood, Vinyl
Foundation	Concrete Perimeter

Additional Information

Date Listed June 19th, 2025
Days on Market 13
Zoning Zone 58

DATA IS DEEMED RELIABLE BUT IS NOT GUARANTEED ACCURATE BY THE REALTORS® ASSOCIATION OF EDMONTON. COPYRIGHT 2025 BY THE REALTORS® ASSOCIATION OF EDMONTON. ALL RIGHTS RESERVED.Trademarks are owned or controlled by the Canadian Real Estate Association (CREA) and identify real estate professionals who are members of CREA (REALTOR®, REALTORS®) and/or the quality of services they provide (MLS®, Multiple Listing Service®)
Listing information last updated on July 2nd, 2025 at 6:02am MDT