

\$450,000 - 2150 Maple Road, Edmonton

MLS® #E4442851

\$450,000

3 Bedroom, 2.50 Bathroom, 1,447 sqft

Single Family on 0.00 Acres

Maple Crest, Edmonton, AB

Welcome to your new home in the vibrant and family-friendly community of Maple Crest. Formerly the Homes by Avi showhome, this exceptional property showcases premium finishes throughout, including elegant quartz countertops, a striking feature wall, upgraded backsplash, slim shaker cabinets, and designer hardware. The main floor is bathed in natural light and offers a spacious living room that seamlessly flows into the stylish kitchen and dining area—perfect for entertaining. A convenient two-piece powder room completes this level. Upstairs, you’ll find three generously sized bedrooms, a four-piece main bathroom, a three-piece ensuite, and the added convenience of second-floor laundry. The unfinished basement is thoughtfully laid out, providing endless possibilities for future development. Enjoy the ideal location with easy access to shopping, restaurants, Whitemud Drive, Anthony Henday, the Meadows Recreation Centre, and several nearby schools.

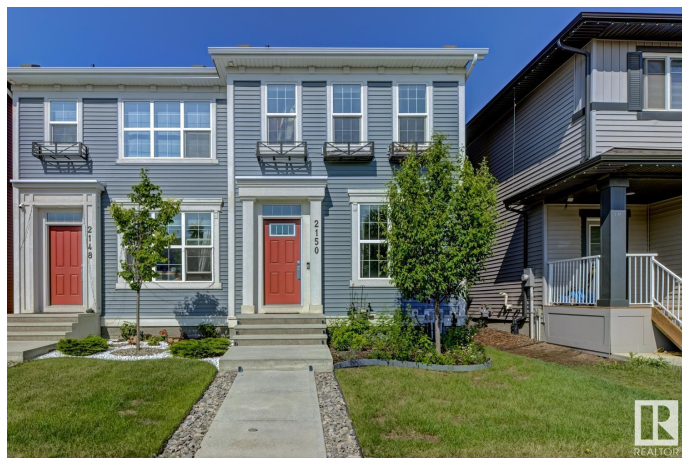
Built in 2020

Essential Information

MLS® # E4442851

Price \$450,000

Bedrooms 3



Bathrooms	2.50
Full Baths	2
Half Baths	1
Square Footage	1,447
Acres	0.00
Year Built	2020
Type	Single Family
Sub-Type	Half Duplex
Style	2 Storey
Status	Active

Community Information

Address	2150 Maple Road
Area	Edmonton
Subdivision	Maple Crest
City	Edmonton
County	ALBERTA
Province	AB
Postal Code	T6T 2L4

Amenities

Amenities	Deck, Hot Tub, See Remarks
Parking	Double Garage Detached

Interior

Interior Features	ensuite bathroom
Appliances	Dishwasher-Built-In, Dryer, Refrigerator, Stove-Electric, Washer
Heating	Forced Air-1, Natural Gas
Stories	2
Has Basement	Yes
Basement	Full, Unfinished

Exterior

Exterior	Wood, Vinyl
Exterior Features	Back Lane, Picnic Area, Playground Nearby, Public Swimming Pool, Public Transportation, Schools, Shopping Nearby, See Remarks
Roof	Asphalt Shingles
Construction	Wood, Vinyl
Foundation	Concrete Perimeter

Additional Information

Date Listed June 17th, 2025
Days on Market 20
Zoning Zone 30

DATA IS DEEMED RELIABLE BUT IS NOT GUARANTEED ACCURATE BY THE REALTORS® ASSOCIATION OF EDMONTON. COPYRIGHT 2025 BY THE REALTORS® ASSOCIATION OF EDMONTON. ALL RIGHTS RESERVED.Trademarks are owned or controlled by the Canadian Real Estate Association (CREA) and identify real estate professionals who are members of CREA (REALTOR®, REALTORS®) and/or the quality of services they provide (MLS®, Multiple Listing Service®)
Listing information last updated on July 7th, 2025 at 7:02am MDT