

\$489,900 - 9928 181 Street, Edmonton

MLS® #E4441964

\$489,900

4 Bedroom, 2.50 Bathroom, 1,860 sqft

Single Family on 0.00 Acres

La Perle, Edmonton, AB

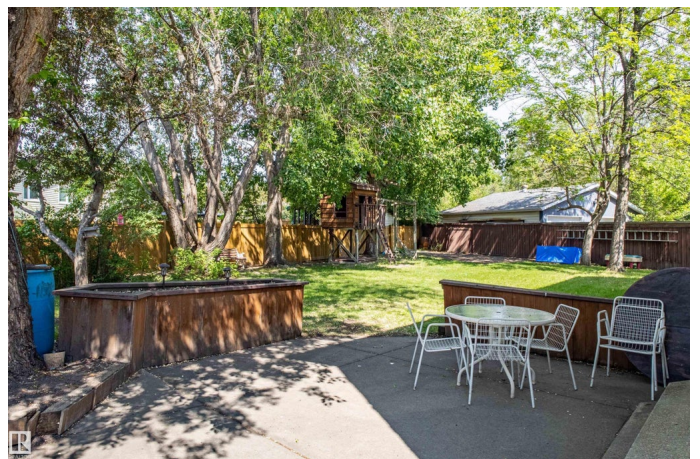
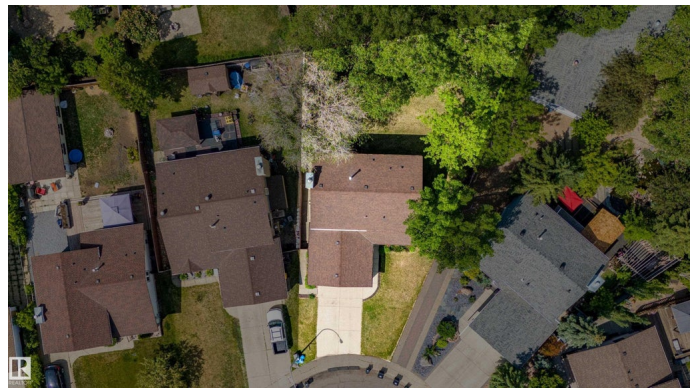
This spacious home is tucked away in a pie-shaped lot, surrounded by mature trees, in a quiet corner of LaPerle, with a cul-de-sac feel! Upstairs you'll find FOUR bedrooms with newer carpet and a 4-piece bath. The HUGE primary bed has a walk-in closet and your own 4-piece ensuite! On the main floor: a bright front living room with vinyl window (2017), newer hardwood in the dining room, a roomy kitchen with a newer dishwasher, family room with wood-burning stove insert, 2-piece bathroom, plus a convenient laundry space with a newer dryer. The partly finished basement is roughed in for a future 4th bathroom and has space for a 5th bedroom. Updates include: roof (2018), furnace fan motor (2023), water heater (2021, under warranty), back fence (2024), and exterior wood trim painted in 2023. In the backyard, dappled in shade, find a playhouse with a sandbox and swings for the kids! Just a 15-min walk to La Perle School, minutes to shopping centres, and quick access to the Henday, Whitemud & Yellowhead.

Built in 1981

Essential Information

MLS® # E4441964

Price \$489,900



Bedrooms	4
Bathrooms	2.50
Full Baths	2
Half Baths	1
Square Footage	1,860
Acres	0.00
Year Built	1981
Type	Single Family
Sub-Type	Detached Single Family
Style	2 Storey
Status	Active

Community Information

Address	9928 181 Street
Area	Edmonton
Subdivision	La Perle
City	Edmonton
County	ALBERTA
Province	AB
Postal Code	T5T 3S1

Amenities

Amenities	On Street Parking, Closet Organizers, Detectors Smoke, Hot Water Natural Gas, No Animal Home, No Smoking Home, Patio
Parking Spaces	4
Parking	Double Garage Attached

Interior

Interior Features	ensuite bathroom
Appliances	Dishwasher-Built-In, Dryer, Garage Control, Garage Opener, Refrigerator, Stove-Electric, Washer, Window Coverings, See Remarks
Heating	Forced Air-1, Natural Gas
Fireplace	Yes
Fireplaces	Glass Door, Insert, Woodstove
Stories	3
Has Basement	Yes
Basement	Full, Partially Finished

Exterior

Exterior	Wood, Stucco
Exterior Features	Fenced, Flat Site, Landscaped, Level Land, No Back Lane, Playground Nearby, Public Transportation, Schools, Shopping Nearby, Treed Lot, See Remarks
Roof	Asphalt Shingles
Construction	Wood, Stucco
Foundation	Concrete Perimeter

School Information

Elementary	LaPerle School
Middle	McKernan School
High	Jasper Place School

Additional Information

Date Listed	June 12th, 2025
Days on Market	87
Zoning	Zone 20

DATA IS DEEMED RELIABLE BUT IS NOT GUARANTEED ACCURATE BY THE REALTORS® ASSOCIATION OF EDMONTON. COPYRIGHT 2025 BY THE REALTORS® ASSOCIATION OF EDMONTON. ALL RIGHTS RESERVED. Trademarks are owned or controlled by the Canadian Real Estate Association (CREA) and identify real estate professionals who are members of CREA (REALTOR®, REALTORS®) and/or the quality of services they provide (MLS®, Multiple Listing Service®)

Listing information last updated on September 7th, 2025 at 5:02pm MDT