

# \$435,000 - 19 Eton Link, Spruce Grove

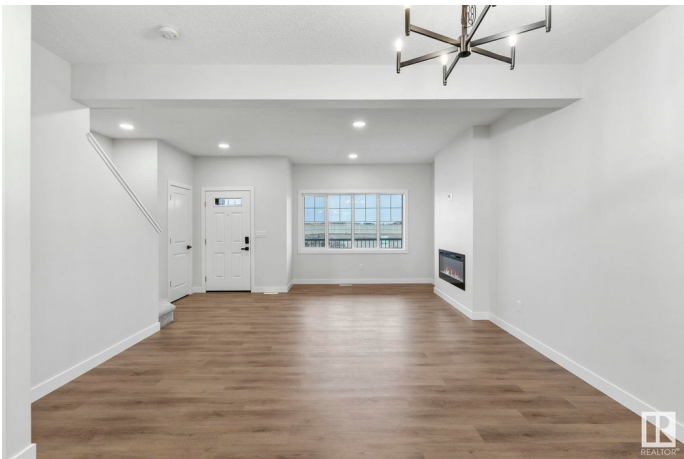
MLS® #E4441952

**\$435,000**

3 Bedroom, 2.50 Bathroom, 1,260 sqft  
Single Family on 0.00 Acres

Easton, Spruce Grove, AB

5 Reasons To Love This Home: 1) Open Concept Living – Enjoy a bright, flowing main floor layout perfect for entertaining, complete with a cozy fireplace in the living room. 2) Functional Design – Thoughtfully planned with upper-level laundry and 3 spacious bedrooms, including a primary suite featuring a walk-in closet and a 4pc ensuite. 3) Quality Finishes – From top to bottom, this home showcases high-end touches that make a lasting impression. 4) Smart Convenience – Rear lane access with a parking pad and a double detached garage offers flexibility. 5) Unbeatable Location – Nestled near schools, parks, amenities, and with excellent access into Edmonton, making your daily commute a breeze. \*Photos are representative\*



Built in 2025

## Essential Information

MLS® #	E4441952
Price	\$435,000
Bedrooms	3
Bathrooms	2.50
Full Baths	2
Half Baths	1
Square Footage	1,260
Acres	0.00

Year Built	2025
Type	Single Family
Sub-Type	Detached Single Family
Style	2 Storey
Status	Active

### **Community Information**

Address	19 Eton Link
Area	Spruce Grove
Subdivision	Easton
City	Spruce Grove
County	ALBERTA
Province	AB
Postal Code	T7X 4B7

### **Amenities**

Amenities	Ceiling 9 ft., Closet Organizers, Detectors Smoke, No Animal Home, No Smoking Home, Vinyl Windows
Parking	Double Garage Detached, Parking Pad Cement/Paved

### **Interior**

Interior Features	ensuite bathroom
Appliances	Dishwasher-Built-In, Microwave Hood Fan, Refrigerator, Stove-Electric
Heating	Forced Air-1, Natural Gas
Fireplace	Yes
Fireplaces	Insert
Stories	2
Has Basement	Yes
Basement	Full, Unfinished

### **Exterior**

Exterior	Wood, Vinyl
Exterior Features	Back Lane, Park/Reserve, Playground Nearby, Schools, Shopping Nearby
Roof	Asphalt Shingles
Construction	Wood, Vinyl
Foundation	Concrete Perimeter

### **Additional Information**

Date Listed June 12th, 2025

Days on Market 5

Zoning Zone 91

DATA IS DEEMED RELIABLE BUT IS NOT GUARANTEED ACCURATE BY THE REALTORS® ASSOCIATION OF EDMONTON. COPYRIGHT 2025 BY THE REALTORS® ASSOCIATION OF EDMONTON. ALL RIGHTS RESERVED. Trademarks are owned or controlled by the Canadian Real Estate Association (CREA) and identify real estate professionals who are members of CREA (REALTOR®, REALTORS®) and/or the quality of services they provide (MLS®, Multiple Listing Service®)

Listing information last updated on June 17th, 2025 at 6:17am MDT