

\$550,000 - 29 170 Kingswood Boulevard, St. Albert

MLS® #E4440929

\$550,000

3 Bedroom, 3.00 Bathroom, 1,316 sqft

Condo / Townhouse on 0.00 Acres

Kingswood, St. Albert, AB

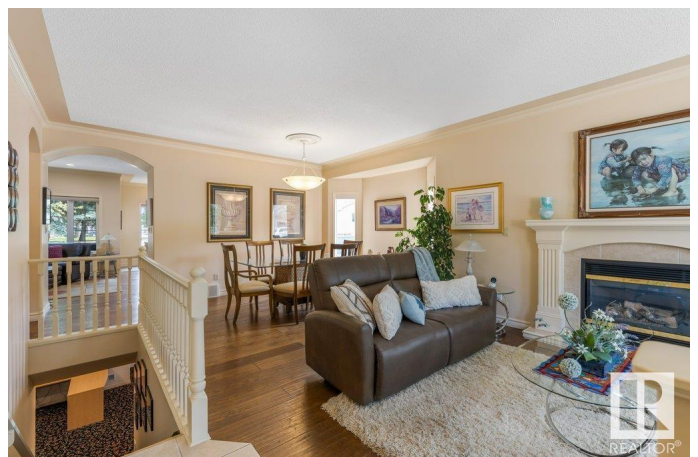
Welcome to this beautifully maintained 1,315 sq ft bungalow-style adult condo in the prestigious Kingswood community of St. Albert. This bright, end-unit Heredity-built home offers an abundance of natural light, hardwood floors, & an inviting open-concept living and dining area complete with a cozy gas fireplace. The spacious kitchen boasts granite countertops, stainless steel appliances, a corner pantry & a breakfast nook that opens to a charming sitting room with access to the deck & stone patio—perfect for morning coffee or entertaining. The primary bedroom features a walk-in closet and a 3-piece ensuite. A 4-piece main bath & convenient laundry complete the main level. The professionally finished basement includes another gas fireplace with custom cabinetry, a large rec area, 2 generously sized bedrooms, & plenty of storage space. Enjoy the benefits of a 19'x24' attached double garage in this quiet, upscale complex surrounded by walking trails & natural beauty. A rare gem in a sought-after location!

Built in 2000

Essential Information

MLS® # E4440929

Price \$550,000



Bedrooms	3
Bathrooms	3.00
Full Baths	3
Square Footage	1,316
Acres	0.00
Year Built	2000
Type	Condo / Townhouse
Sub-Type	Half Duplex
Style	Bungalow
Status	Active

Community Information

Address	29 170 Kingswood Boulevard
Area	St. Albert
Subdivision	Kingswood
City	St. Albert
County	ALBERTA
Province	AB
Postal Code	T8N 6Z6

Amenities

Amenities	Air Conditioner, Deck, Parking-Visitor, Patio, See Remarks
Parking	Double Garage Attached

Interior

Interior Features	ensuite bathroom
Appliances	Air Conditioning-Central, Dishwasher-Built-In, Dryer, Microwave Hood Fan, Refrigerator, Stove-Electric, Washer, Window Coverings
Heating	Forced Air-1, Natural Gas
Fireplace	Yes
Fireplaces	Mantel, Tile Surround
Stories	2
Has Basement	Yes
Basement	Full, Finished

Exterior

Exterior	Wood, Stucco
Exterior Features	Fruit Trees/Shrubs, Golf Nearby, Landscaped, No Through Road, Public Transportation, See Remarks

Roof	Asphalt Shingles
Construction	Wood, Stucco
Foundation	Concrete Perimeter

Additional Information

Date Listed	June 6th, 2025
Days on Market	2
Zoning	Zone 24
Condo Fee	\$410

DATA IS DEEMED RELIABLE BUT IS NOT GUARANTEED ACCURATE BY THE REALTORS® ASSOCIATION OF EDMONTON. COPYRIGHT 2025 BY THE REALTORS® ASSOCIATION OF EDMONTON. ALL RIGHTS RESERVED.Trademarks are owned or controlled by the Canadian Real Estate Association (CREA) and identify real estate professionals who are members of CREA (REALTOR®, REALTORS®) and/or the quality of services they provide (MLS®, Multiple Listing Service®)

Listing information last updated on June 8th, 2025 at 12:02pm MDT