

\$305,000 - 13212 128 Avenue, Edmonton

MLS® #E4440810

\$305,000

4 Bedroom, 2.00 Bathroom, 1,129 sqft

Single Family on 0.00 Acres

Athlone, Edmonton, AB

Big Bi-Level on a big lot in Athlone, solid fixer upper special or an amazing lot across from a greenspace. Double Detached garage. 4 Bedrooms, 2 baths, almost all original finishing throughout.

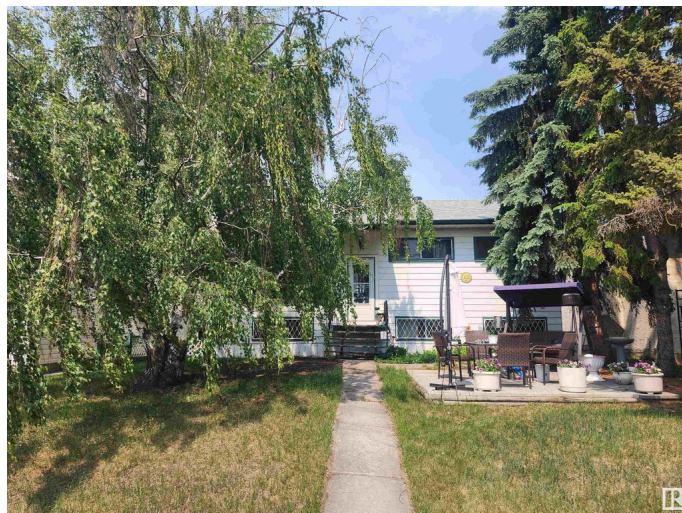
Built in 1957

Essential Information

MLS® #	E4440810
Price	\$305,000
Bedrooms	4
Bathrooms	2.00
Full Baths	2
Square Footage	1,129
Acres	0.00
Year Built	1957
Type	Single Family
Sub-Type	Detached Single Family
Style	Bi-Level
Status	Active

Community Information

Address	13212 128 Avenue
Area	Edmonton
Subdivision	Athlone
City	Edmonton
County	ALBERTA



Province	AB
Postal Code	T5L 3H2

Amenities

Amenities	See Remarks
Parking Spaces	4
Parking	Double Garage Detached

Interior

Appliances	Fan-Ceiling, Refrigerator, Stove-Electric, Window Coverings
Heating	Forced Air-1, Natural Gas
Stories	2
Has Basement	Yes
Basement	Full, Finished

Exterior

Exterior	Wood, Metal
Exterior Features	See Remarks
Roof	Asphalt Shingles
Construction	Wood, Metal
Foundation	Concrete Perimeter

Additional Information

Date Listed	June 6th, 2025
Days on Market	2
Zoning	Zone 01

DATA IS DEEMED RELIABLE BUT IS NOT GUARANTEED ACCURATE BY THE REALTORS® ASSOCIATION OF EDMONTON. COPYRIGHT 2025 BY THE REALTORS® ASSOCIATION OF EDMONTON. ALL RIGHTS RESERVED.Trademarks are owned or controlled by the Canadian Real Estate Association (CREA) and identify real estate professionals who are members of CREA (REALTOR®, REALTORS®) and/or the quality of services they provide (MLS®, Multiple Listing Service®)

Listing information last updated on June 8th, 2025 at 12:32pm MDT