

## \$589,900 - 3805 Claxton Close, Edmonton

MLS® #E4440808

**\$589,900**

3 Bedroom, 2.50 Bathroom, 1,883 sqft

Single Family on 0.00 Acres

Chappelle Area, Edmonton, AB

This beautifully maintained and thoughtfully updated home is nestled in the sought-after Chappelle community, offering a perfect blend of comfort, functionality, and style. With over 1,880 sq. ft. above grade, this ideal family layout features a spacious open-concept main floor includes a 2-piece bathroom, a large living room with fireplace, a designated dining area, and modern kitchen with a gas stove and ample storage, including a walk-in pantry. Upstairs, youâ€™ll find three generous bedrooms, including a primary suite with walk-in closet and a full ensuite with in-floor-heating feature, plus a versatile bonus roomâ€”perfect for a home office, playroom, or media space. Recent updates include: Brand new carpet throughout the upper level, Freshly painted walls for a clean and modern feel, Durable vinyl flooring on the main level, GAS stove for an upgraded cooking experience. The home is located on a quiet street, close to schools, parks, trails and quick access to major routes like the Henday and 41 Ave SW.

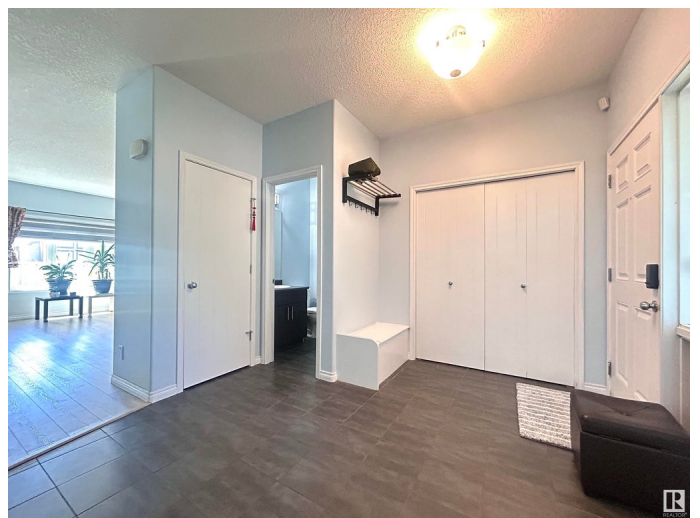
Built in 2013

### Essential Information

MLS® # E4440808

Price \$589,900

Bedrooms 3



Bathrooms	2.50
Full Baths	2
Half Baths	1
Square Footage	1,883
Acres	0.00
Year Built	2013
Type	Single Family
Sub-Type	Detached Single Family
Style	2 Storey
Status	Active

### **Community Information**

Address	3805 Claxton Close
Area	Edmonton
Subdivision	Chappelle Area
City	Edmonton
County	ALBERTA
Province	AB
Postal Code	T6W 1Y5

### **Amenities**

Amenities	Air Conditioner, Ceiling 9 ft., See Remarks, HRV System
Parking	Double Garage Attached

### **Interior**

Interior Features	ensuite bathroom
Appliances	Air Conditioning-Central, Dishwasher-Built-In, Dryer, Garage Control, Garage Opener, Hood Fan, Refrigerator, Stove-Gas, Washer, Water Softener
Heating	Forced Air-1, Natural Gas
Stories	2
Has Basement	Yes
Basement	Full, Unfinished

### **Exterior**

Exterior	Wood, Vinyl
Exterior Features	Fenced, Landscaped, See Remarks
Roof	Asphalt Shingles
Construction	Wood, Vinyl

Foundation                      Concrete Perimeter

**Additional Information**

Date Listed                      June 6th, 2025  
Days on Market                11  
Zoning                              Zone 55  
HOA Fees                         105  
HOA Fees Freq.                Annually

DATA IS DEEMED RELIABLE BUT IS NOT GUARANTEED ACCURATE BY THE REALTORS® ASSOCIATION OF EDMONTON. COPYRIGHT 2025 BY THE REALTORS® ASSOCIATION OF EDMONTON. ALL RIGHTS RESERVED.Trademarks are owned or controlled by the Canadian Real Estate Association (CREA) and identify real estate professionals who are members of CREA (REALTOR®, REALTORS®) and/or the quality of services they provide (MLS®, Multiple Listing Service®)  
Listing information last updated on June 17th, 2025 at 2:47pm MDT