

\$434,000 - 4451 Mccrae Avenue, Edmonton

MLS® #E4439220

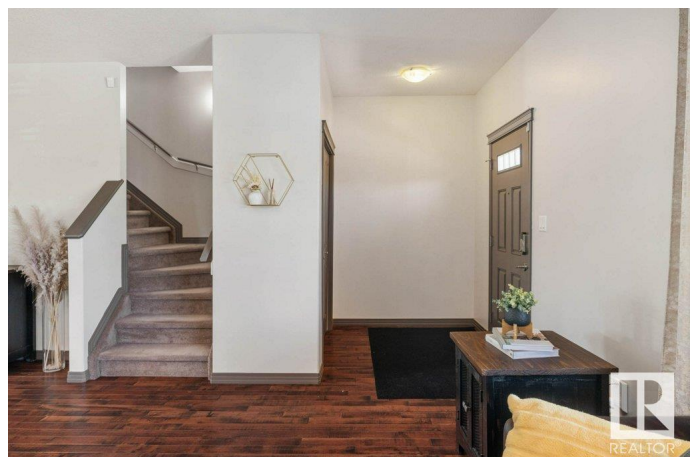
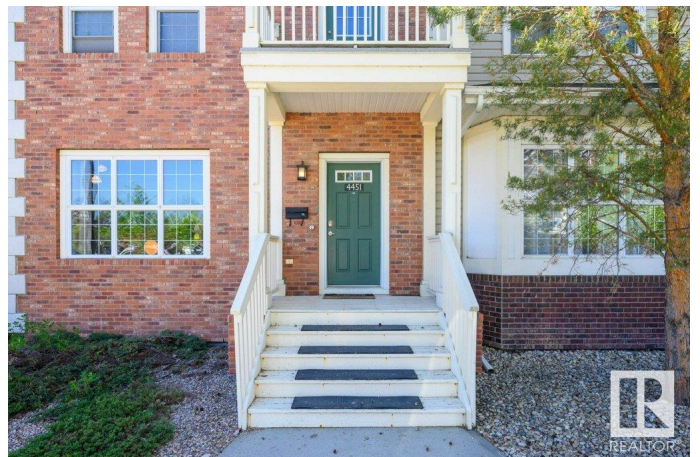
\$434,000

3 Bedroom, 2.50 Bathroom, 2,062 sqft

Condo / Townhouse on 0.00 Acres

Griesbach, Edmonton, AB

Step into style and comfort in this 3-storey end-unit townhome located in the heart of Griesbach, one of Edmonton's most scenic and family-friendly neighborhoods. This end unit home offers natural light with extra windows, an open-concept main floor with a spacious kitchen and dining area, and a private fenced yard perfect for outdoor enjoyment. Upstairs, the primary suite is a true retreat set apart for privacy, complete with a walk-in closet and a large ensuite. Two additional bedrooms share a "Jack & Jill" bathroom, upper laundry & dedicated office space, ideal for working from home or homework time. A finished basement adds even more versatility, while the double detached garage provides secure parking & storage. Griesbach is known for its tree-lined boulevards, scenic walking trails, lakes, & parks yet you're still just minutes from shopping, restaurants, schools, and major routes. This is more than a home it's a lifestyle in one of Edmonton's most beautiful and connected communities. Don't miss it!



Built in 2006

Essential Information

MLS® # E4439220

Price \$434,000

Bedrooms	3
Bathrooms	2.50
Full Baths	2
Half Baths	1
Square Footage	2,062
Acres	0.00
Year Built	2006
Type	Condo / Townhouse
Sub-Type	Townhouse
Style	3 Storey
Status	Active

Community Information

Address	4451 Mccrae Avenue
Area	Edmonton
Subdivision	Griesbach
City	Edmonton
County	ALBERTA
Province	AB
Postal Code	T5E 4G6

Amenities

Amenities	On Street Parking, Ceiling 9 ft., Closet Organizers, Deck, Detectors Smoke, Hot Water Instant, No Smoking Home, Vinyl Windows
Parking Spaces	2
Parking	Double Garage Detached

Interior

Interior Features	ensuite bathroom
Appliances	Alarm/Security System, Dishwasher-Built-In, Dryer, Garage Control, Garage Opener, Humidifier-Power(Furnace), Microwave Hood Fan, Refrigerator, Stove-Electric, Vacuum System Attachments, Vacuum Systems, Washer, Window Coverings
Heating	Forced Air-1, Natural Gas
Fireplace	Yes
Fireplaces	Insert, Tile Surround
Stories	4
Has Basement	Yes
Basement	Full, Finished

Exterior

Exterior	Wood, Brick, Vinyl
Exterior Features	Back Lane, Corner Lot, Flat Site, Low Maintenance Landscape, Paved Lane, Schools, Shopping Nearby
Roof	Asphalt Shingles
Construction	Wood, Brick, Vinyl
Foundation	Concrete Perimeter

School Information

Elementary	Major General Griesbach
Middle	Mary Butterworth
High	Queen Elizabeth

Additional Information

Date Listed	May 29th, 2025
Days on Market	10
Zoning	Zone 27
Condo Fee	\$471

DATA IS DEEMED RELIABLE BUT IS NOT GUARANTEED ACCURATE BY THE REALTORS® ASSOCIATION OF EDMONTON. COPYRIGHT 2025 BY THE REALTORS® ASSOCIATION OF EDMONTON. ALL RIGHTS RESERVED.Trademarks are owned or controlled by the Canadian Real Estate Association (CREA) and identify real estate professionals who are members of CREA (REALTOR®, REALTORS®) and/or the quality of services they provide (MLS®, Multiple Listing Service®)

Listing information last updated on June 8th, 2025 at 4:47pm MDT