

\$430,000 - 1324 George Close, Edmonton

MLS® #E4438496

\$430,000

3 Bedroom, 3.50 Bathroom, 1,614 sqft

Single Family on 0.00 Acres

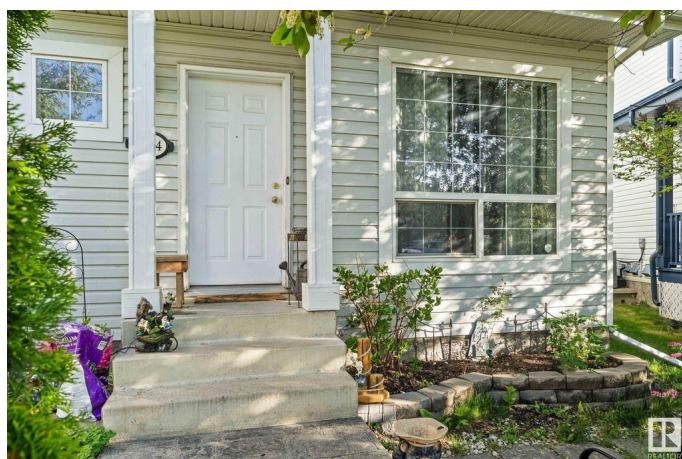
Glastonbury, Edmonton, AB

Welcome home! This lovely 2 storey is tucked away in a quiet cul-de-sac! This property features 3 spacious bedrooms and 3.5 bathrooms, perfect for families. With fresh paint & new flooring, and some new appliances it's completely move-in ready. The finished basement adds even more value, featuring a bedroom, bathroom and second kitchen. With quick access to the Henday, Whitemud, and all local amenities, convenience is at your doorstep. Don't miss the opportunity to own this beautiful home!

Built in 2002

Essential Information

MLS® #	E4438496
Price	\$430,000
Bedrooms	3
Bathrooms	3.50
Full Baths	3
Half Baths	1
Square Footage	1,614
Acres	0.00
Year Built	2002
Type	Single Family
Sub-Type	Detached Single Family
Style	2 Storey



Status	Active
--------	--------

Community Information

Address	1324 George Close
Area	Edmonton
Subdivision	Glastonbury
City	Edmonton
County	ALBERTA
Province	AB
Postal Code	T5T 6S2

Amenities

Amenities	Deck, Patio
Parking	Parking Pad Cement/Paved

Interior

Interior Features	ensuite bathroom
Appliances	Dryer, Fan-Ceiling, Storage Shed, Washer, Window Coverings, Refrigerators-Two, Stoves-Two, Dishwasher-Two
Heating	Forced Air-1, Natural Gas
Stories	3
Has Basement	Yes
Basement	Full, Finished

Exterior

Exterior	Wood, Vinyl
Exterior Features	Back Lane, Cul-De-Sac, Fenced, Golf Nearby, Playground Nearby, Schools, Shopping Nearby
Roof	Asphalt Shingles
Construction	Wood, Vinyl
Foundation	Concrete Perimeter

School Information

Elementary	Kim Hung,Sis Anna Brockman
Middle	Kim Hung,Sis Anna Brockman
High	JP, St Oscar Romero

Additional Information

Date Listed	May 26th, 2025
Days on Market	101

Zoning	Zone 58
HOA Fees	200
HOA Fees Freq.	Annually

DATA IS DEEMED RELIABLE BUT IS NOT GUARANTEED ACCURATE BY THE REALTORS® ASSOCIATION OF EDMONTON. COPYRIGHT 2025 BY THE REALTORS® ASSOCIATION OF EDMONTON. ALL RIGHTS RESERVED. Trademarks are owned or controlled by the Canadian Real Estate Association (CREA) and identify real estate professionals who are members of CREA (REALTOR®, REALTORS®) and/or the quality of services they provide (MLS®, Multiple Listing Service®)

Listing information last updated on September 4th, 2025 at 12:17pm MDT