

## \$529,888 - 10724 183 Avenue, Edmonton

MLS® #E4436354

**\$529,888**

4 Bedroom, 3.50 Bathroom, 1,661 sqft

Single Family on 0.00 Acres

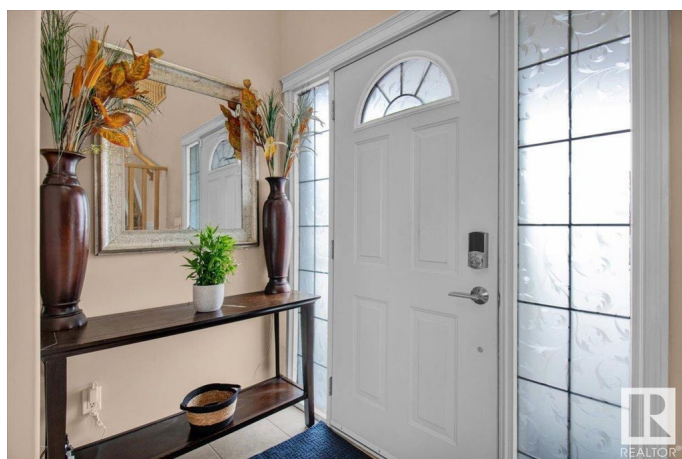
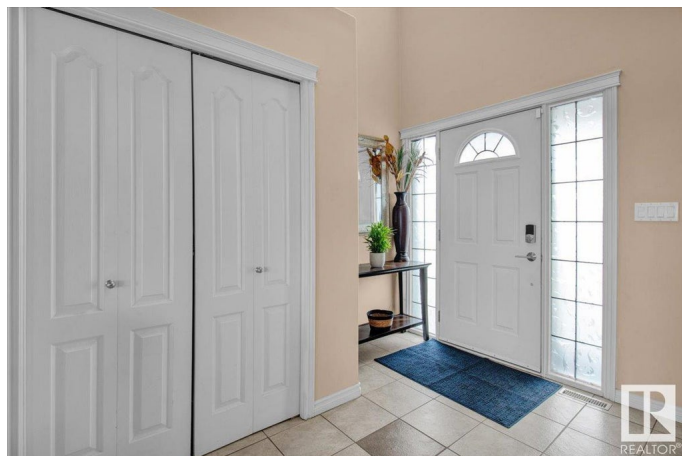
Chamberly, Edmonton, AB

Spacious open-concept home on a quiet street, perfect for family living. Inviting front entrance is open to above, leading into a bright living room with roman pillars and a cozy corner fireplace. The kitchen offers a corner pantry and breakfast bar. Upstairs features a versatile loft, three bedrooms, and a main bath. The primary bedroom includes a walk-in closet and 4pc ensuite. The 90% finished basement adds valuable space with laminate flooring includes a rec room, fourth bedroom, full bathroom, and an unfinished laundry/storage area. Enjoy the fully landscaped backyard with a deck and included shed. Close to Anthony Henday and has a tankless water heater!

Built in 2004

### Essential Information

MLS® #	E4436354
Price	\$529,888
Bedrooms	4
Bathrooms	3.50
Full Baths	3
Half Baths	1
Square Footage	1,661
Acres	0.00
Year Built	2004



Type	Single Family
Sub-Type	Detached Single Family
Style	2 Storey
Status	Active

### Community Information

Address	10724 183 Avenue
Area	Edmonton
Subdivision	Chambery
City	Edmonton
County	ALBERTA
Province	AB
Postal Code	T5X 6E2

### Amenities

Amenities	Deck, Hot Water Tankless
Parking	Double Garage Attached

### Interior

Interior Features	ensuite bathroom
Appliances	Dishwasher-Built-In, Dryer, Hood Fan, Oven-Built-In, Oven-Microwave, Refrigerator, Storage Shed, Stove-Countertop Gas, Washer, Window Coverings
Heating	Forced Air-1, Natural Gas
Fireplace	Yes
Fireplaces	Corner, Insert, Tile Surround
Stories	3
Has Basement	Yes
Basement	Full, Partially Finished

### Exterior

Exterior	Wood, Stucco
Exterior Features	Fenced, Golf Nearby, Landscaped, No Back Lane, Playground Nearby, Public Swimming Pool, Public Transportation, Schools, Shopping Nearby
Roof	Asphalt Shingles
Construction	Wood, Stucco
Foundation	Concrete Perimeter

### Additional Information

Date Listed May 14th, 2025

Days on Market 25

Zoning Zone 27

DATA IS DEEMED RELIABLE BUT IS NOT GUARANTEED ACCURATE BY THE REALTORS® ASSOCIATION OF EDMONTON. COPYRIGHT 2025 BY THE REALTORS® ASSOCIATION OF EDMONTON. ALL RIGHTS RESERVED. Trademarks are owned or controlled by the Canadian Real Estate Association (CREA) and identify real estate professionals who are members of CREA (REALTOR®, REALTORS®) and/or the quality of services they provide (MLS®, Multiple Listing Service®)

Listing information last updated on June 8th, 2025 at 3:32pm MDT