

\$524,900 - 24 Carlyle Crescent, Sherwood Park

MLS® #E4435449

\$524,900

4 Bedroom, 2.50 Bathroom, 1,765 sqft

Single Family on 0.00 Acres

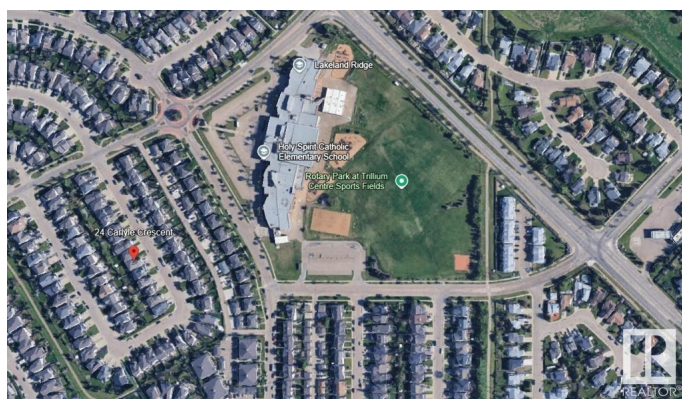
Lakeland Ridge, Sherwood Park, AB

This immaculate 2-storey home offers 2432 sq ft of living space with 4 bedrooms (3 up, 1 down), 3 bathrooms & A/C. A warm neutral palette & cozy fireplace make the living room inviting, flowing into the dining area & kitchen with rich maple cabinets and a raised eating bar. Upstairs features a spacious bonus room & 3 generous sized bedrooms, including a king-sized primary with 4pc ensuite (soaker tub & shower) & walk-in closet. The fully finished basement includes a large bedroom, family/recreation room & rough-in for a bathroom. Newer shingles, hot water tank, A/C, deck, window blinds. New flooring on main level & garage opener (2024). The backyard and deck are ideal for entertaining, play or relaxing. Located near the Trillium Centre & walking distance to schools. Close to all amenities! MOVE-IN READY!

Built in 2005

Essential Information

| | |
|----------------|-----------|
| MLS® # | E4435449 |
| Price | \$524,900 |
| Bedrooms | 4 |
| Bathrooms | 2.50 |
| Full Baths | 2 |
| Half Baths | 1 |
| Square Footage | 1,765 |



| | |
|------------|------------------------|
| Acres | 0.00 |
| Year Built | 2005 |
| Type | Single Family |
| Sub-Type | Detached Single Family |
| Style | 2 Storey |
| Status | Active |

Community Information

| | |
|-------------|---------------------|
| Address | 24 Carlyle Crescent |
| Area | Sherwood Park |
| Subdivision | Lakeland Ridge |
| City | Sherwood Park |
| County | ALBERTA |
| Province | AB |
| Postal Code | T8H 2T6 |

Amenities

| | |
|----------------|--|
| Amenities | Air Conditioner, Deck, No Animal Home, No Smoking Home |
| Parking Spaces | 4 |
| Parking | Double Garage Attached, Over Sized |

Interior

| | |
|-------------------|--|
| Interior Features | ensuite bathroom |
| Appliances | Air Conditioning-Central, Dishwasher-Built-In, Dryer, Garage Control, Garage Opener, Hood Fan, Oven-Microwave, Storage Shed, Stove-Electric, Washer, Window Coverings, Refrigerators-Two |
| Heating | Forced Air-1, Natural Gas |
| Fireplace | Yes |
| Fireplaces | Mantel, Tile Surround |
| Stories | 3 |
| Has Basement | Yes |
| Basement | Full, Finished |

Exterior

| | |
|-------------------|---|
| Exterior | Wood, Vinyl |
| Exterior Features | Fenced, Flat Site, Landscaped, Playground Nearby, Public Transportation, Schools, Shopping Nearby |
| Roof | Asphalt Shingles |
| Construction | Wood, Vinyl |

Foundation Concrete Perimeter

School Information

Elementary Lakeland Ridge
Middle Lakeland Ridge
High Salisbury Composite

Additional Information

Date Listed May 9th, 2025
Days on Market 7
Zoning Zone 25

DATA IS DEEMED RELIABLE BUT IS NOT GUARANTEED ACCURATE BY THE REALTORS® ASSOCIATION OF EDMONTON. COPYRIGHT 2025 BY THE REALTORS® ASSOCIATION OF EDMONTON. ALL RIGHTS RESERVED.Trademarks are owned or controlled by the Canadian Real Estate Association (CREA) and identify real estate professionals who are members of CREA (REALTOR®, REALTORS®) and/or the quality of services they provide (MLS®, Multiple Listing Service®)
Listing information last updated on May 16th, 2025 at 10:47am MDT