

\$399,900 - 10622 150 Street, Edmonton

MLS® #E4435003

\$399,900

4 Bedroom, 2.50 Bathroom, 1,195 sqft
Single Family on 0.00 Acres

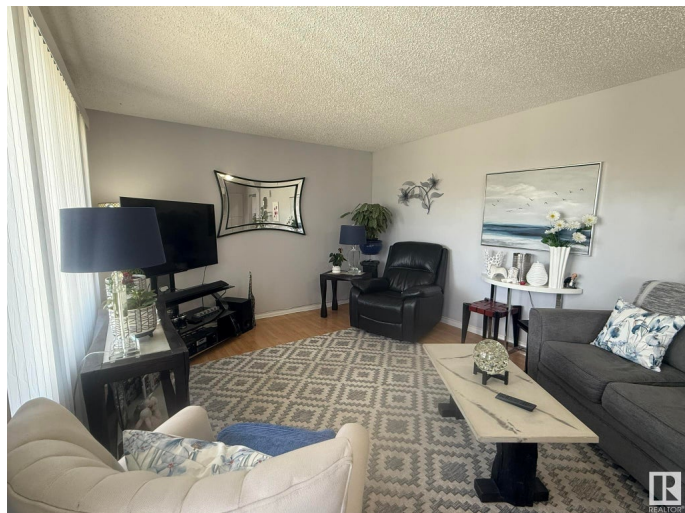
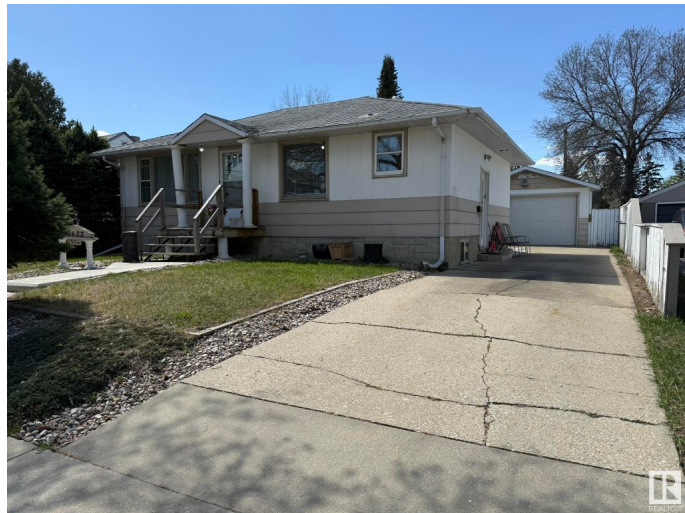
Canora, Edmonton, AB

Located in the mature and convenient Canora neighborhood of Edmonton, this 4 bedroom, 3 bathroom home offers excellent potential for investors or those looking to personalize a space. Featuring alley access to a double attached garage with one side stretching an impressive 47 feet in a tandem configuration there's drive-through access and plenty of room for a workshop, toys, or extra parking. Inside, you'll find a functional main kitchen and a second kitchen in the basement, making it ideal for extended family, guests, or future suite potential. With spacious living areas and a versatile layout, this home is ready for your updates or to start generating income right away. Great location close to schools, transit, and amenities!

Built in 1959

Essential Information

| | |
|----------------|-----------|
| MLS® # | E4435003 |
| Price | \$399,900 |
| Bedrooms | 4 |
| Bathrooms | 2.50 |
| Full Baths | 2 |
| Half Baths | 1 |
| Square Footage | 1,195 |
| Acres | 0.00 |



| | |
|------------|------------------------|
| Year Built | 1959 |
| Type | Single Family |
| Sub-Type | Detached Single Family |
| Style | Bungalow |
| Status | Active |

Community Information

| | |
|-------------|------------------|
| Address | 10622 150 Street |
| Area | Edmonton |
| Subdivision | Canora |
| City | Edmonton |
| County | ALBERTA |
| Province | AB |
| Postal Code | T5P 1R2 |

Amenities

| | |
|-----------|--|
| Amenities | Hot Water Natural Gas |
| Parking | Double Garage Detached, Single Garage Detached |

Interior

| | |
|-------------------|---|
| Interior Features | ensuite bathroom |
| Appliances | Dryer, Refrigerator, Stove-Electric, Washer |
| Heating | Forced Air-1, Natural Gas |
| Stories | 2 |
| Has Basement | Yes |
| Basement | Full, Finished |

Exterior

| | |
|-------------------|------------------------------|
| Exterior | Wood, Metal, Stucco |
| Exterior Features | Back Lane, Fenced, Flat Site |
| Roof | Asphalt Shingles |
| Construction | Wood, Metal, Stucco |
| Foundation | Concrete Perimeter |

Additional Information

| | |
|----------------|---------------|
| Date Listed | May 5th, 2025 |
| Days on Market | 35 |
| Zoning | Zone 21 |

EDMONTON. COPYRIGHT 2025 BY THE REALTORS® ASSOCIATION OF EDMONTON. ALL RIGHTS RESERVED. Trademarks are owned or controlled by the Canadian Real Estate Association (CREA) and identify real estate professionals who are members of CREA (REALTOR®, REALTORS®) and/or the quality of services they provide (MLS®, Multiple Listing Service®)

Listing information last updated on June 8th, 2025 at 9:47pm MDT