

## \$414,900 - 20 South Creek Wynd, Stony Plain

MLS® #E4434916

**\$414,900**

3 Bedroom, 2.50 Bathroom, 1,553 sqft

Single Family on 0.00 Acres

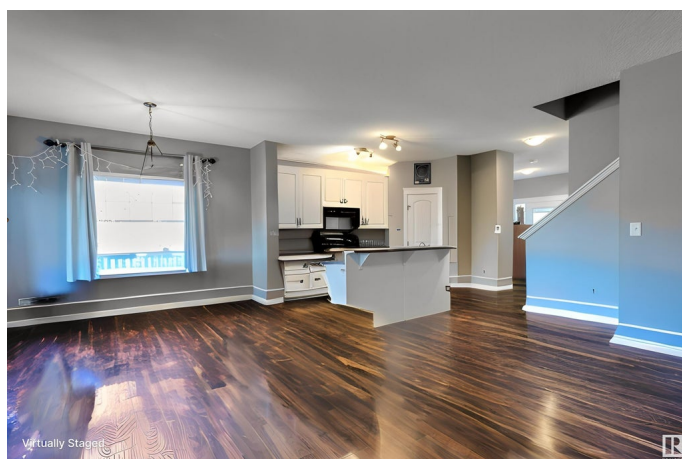
South Creek, Stony Plain, AB

Beautifully maintained 2-storey Pacesetter "Sofia" model in desirable South Creek, located on a spacious corner lot! Bright and welcoming foyer leads into an open-concept main floor with loads of natural light. The kitchen features a large center island with breakfast bar, stainless steel appliances including gas stove, corner pantry, and plenty of workspace. Dining area offers direct access to the backyard and deck—great for entertaining. Upstairs includes 3 spacious bedrooms, upper-floor laundry, and a large primary suite with frosted French doors, walk-in closet, and 4-pc en-suite. Another full 4-pc bath completes the level. Nearly finished basement with rough-in bath—just needs ceilings and baseboards. Central A/C, single attached garage, and great location near parks, playgrounds, and quick access to Hwy 16A and Spruce Grove. Move-in ready with room to grow! (some photos virtually staged)

Built in 2011

### Essential Information

|            |           |
|------------|-----------|
| MLS® #     | E4434916  |
| Price      | \$414,900 |
| Bedrooms   | 3         |
| Bathrooms  | 2.50      |
| Full Baths | 2         |



|                |               |
|----------------|---------------|
| Half Baths     | 1             |
| Square Footage | 1,553         |
| Acres          | 0.00          |
| Year Built     | 2011          |
| Type           | Single Family |
| Sub-Type       | Half Duplex   |
| Style          | 2 Storey      |
| Status         | Active        |

### **Community Information**

|             |                     |
|-------------|---------------------|
| Address     | 20 South Creek Wynd |
| Area        | Stony Plain         |
| Subdivision | South Creek         |
| City        | Stony Plain         |
| County      | ALBERTA             |
| Province    | AB                  |
| Postal Code | T7A 0C8             |

### **Amenities**

|                |  |
|----------------|--|
| Amenities      | Air Conditioner, Deck, Detectors Smoke, No Animal Home, No Smoking Home, Vinyl Windows |
| Parking Spaces | 2  |
| Parking        | Single Garage Attached   |

### **Interior**

|                   |   |
|-------------------|---|
| Interior Features | ensuite bathroom  |
| Appliances        | Air Conditioning-Central, Dishwasher-Built-In, Dryer, Hood Fan, Refrigerator, Storage Shed, Stove-Gas, Washer, Window Coverings |
| Heating           | Forced Air-1, Natural Gas   |
| Fireplace         | Yes   |
| Fireplaces        | Mantel, Tile Surround   |
| Stories           | 2   |
| Has Basement      | Yes   |
| Basement          | Full, Partially Finished  |

### **Exterior**

|                   |  |
|-------------------|--|
| Exterior          | Wood, Stone, Vinyl   |
| Exterior Features | Corner Lot, Fenced, Flat Site, Golf Nearby, Landscaped, Level Land, Playground Nearby, Public Transportation, Schools, Shopping Nearby |

|              |                    |
|--------------|--------------------|
| Roof         | Asphalt Shingles   |
| Construction | Wood, Stone, Vinyl |
| Foundation   | Concrete Perimeter |

**Additional Information**

|                |               |
|----------------|---------------|
| Date Listed    | May 7th, 2025 |
| Days on Market | 41            |
| Zoning         | Zone 91       |

DATA IS DEEMED RELIABLE BUT IS NOT GUARANTEED ACCURATE BY THE REALTORS® ASSOCIATION OF EDMONTON. COPYRIGHT 2025 BY THE REALTORS® ASSOCIATION OF EDMONTON. ALL RIGHTS RESERVED.Trademarks are owned or controlled by the Canadian Real Estate Association (CREA) and identify real estate professionals who are members of CREA (REALTOR®, REALTORS®) and/or the quality of services they provide (MLS®, Multiple Listing Service®)

Listing information last updated on June 17th, 2025 at 8:47pm MDT