

\$429,900 - 1949 119a Street, Edmonton

MLS® #E4433656

\$429,900

3 Bedroom, 2.50 Bathroom, 1,221 sqft
Single Family on 0.00 Acres

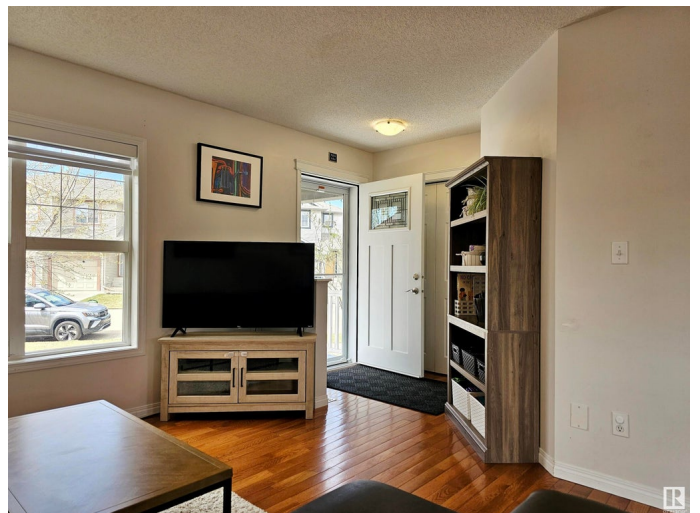
Rutherford (Edmonton), Edmonton, AB

Bright and open 2 story home located in the desirable community of Rutherford and close to all the amenities is sure to impress inside and out. This 3 bedroom, 3 bathroom home with a double detached garage is the perfect place to raise a family! The main floor boasts gleaming hardwood flooring, a large great room and chefs dream kitchen with upgraded appliances, custom white cabinetry, pantry, island and eating nook overlooking the private backyard. The upper level includes 3 bedrooms and full bathroom with soaker tub. The primary retreat includes a walk in closet and full ensuite spa. The fully fenced and landscaped yard includes a fruit tree and private deck. The basement of this home is open and unspoiled - ready for your ideas! Recent upgrades include a new high efficiency furnace.

Built in 2006

Essential Information

MLS® #	E4433656
Price	\$429,900
Bedrooms	3
Bathrooms	2.50
Full Baths	2
Half Baths	1
Square Footage	1,221



Acres	0.00
Year Built	2006
Type	Single Family
Sub-Type	Detached Single Family
Style	2 Storey
Status	Active

Community Information

Address	1949 119a Street
Area	Edmonton
Subdivision	Rutherford (Edmonton)
City	Edmonton
County	ALBERTA
Province	AB
Postal Code	T6W 0E2

Amenities

Amenities	Deck
Parking	Double Garage Detached

Interior

Interior Features	ensuite bathroom
Appliances	Dishwasher-Built-In, Dryer, Garage Control, Garage Opener, Microwave Hood Fan, Refrigerator, Stove-Electric, Washer, Window Coverings
Heating	Forced Air-1, Natural Gas
Stories	2
Has Basement	Yes
Basement	Full, Unfinished

Exterior

Exterior	Wood, Vinyl
Exterior Features	Back Lane, Fenced, Landscaped, Park/Reserve, Playground Nearby, Public Transportation, Schools
Roof	Asphalt Shingles
Construction	Wood, Vinyl
Foundation	Concrete Perimeter

Additional Information

Date Listed	May 1st, 2025
-------------	---------------

Days on Market	2
Zoning	Zone 55
HOA Fees	150
HOA Fees Freq.	Annually

DATA IS DEEMED RELIABLE BUT IS NOT GUARANTEED ACCURATE BY THE REALTORS® ASSOCIATION OF EDMONTON. COPYRIGHT 2025 BY THE REALTORS® ASSOCIATION OF EDMONTON. ALL RIGHTS RESERVED. Trademarks are owned or controlled by the Canadian Real Estate Association (CREA) and identify real estate professionals who are members of CREA (REALTOR®, REALTORS®) and/or the quality of services they provide (MLS®, Multiple Listing Service®)

Listing information last updated on May 3rd, 2025 at 4:47am MDT