

\$209,900 - 205 11203 103a Avenue, Edmonton

MLS® #E4431877

\$209,900

1 Bedroom, 1.00 Bathroom, 649 sqft

Condo / Townhouse on 0.00 Acres

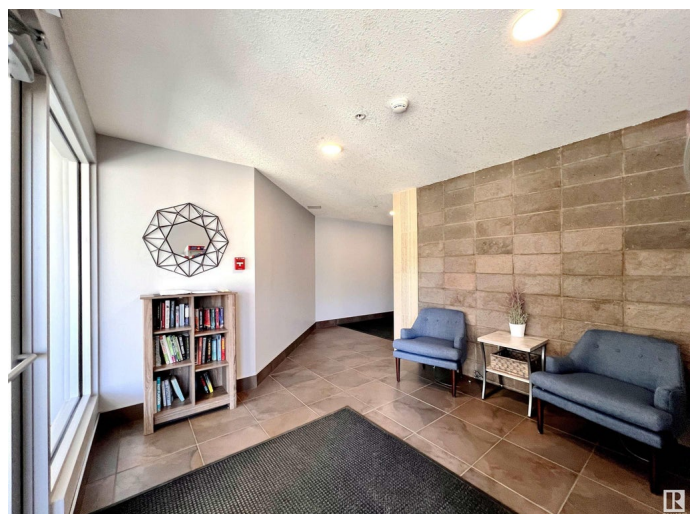
WÃ@hkwÃªntÃ´win, Edmonton, AB

LOCATION, LOCATION, LOCATION ! The Panache On 12th, located in central of Edmonton Downtown, rare concrete/steel lower rise apartment, only minutes to walk to Unity Square Centre, Brewsters, Roger's, the Ice District, U of A, Macewan University; just go opposite for your daily operation. Features as doors secured, open-style layout with 9' ceilings, stainless steel appliances, large eating bar w/granite island, Cork flooring, ceramic tile, double-sided fireplace between living and master bedroom, low maintenance, underground/heated parking, more visitor parking in back lane, etc. After working in a busy day, sit a while in the balcony, have a coffee time and taste the BBQ, overlook the street and enjoy all of your life in Downtown ! 'Early birds get worms' and you won't miss it out !!

Built in 2007

Essential Information

MLS® #	E4431877
Price	\$209,900
Bedrooms	1
Bathrooms	1.00
Full Baths	1
Square Footage	649
Acres	0.00



Year Built	2007
Type	Condo / Townhouse
Sub-Type	Lowrise Apartment
Style	Multi Level Apartment
Status	Active

Community Information

Address	205 11203 103a Avenue
Area	Edmonton
Subdivision	WÃ©hkwÃ©ntÃ©win
City	Edmonton
County	ALBERTA
Province	AB
Postal Code	T5K 2E4

Amenities

Amenities	Ceiling 9 ft., Deck, Detectors Smoke, Intercom, Secured Parking, Security Door, Sprinkler System-Fire, Vinyl Windows
Parking Spaces	1
Parking	Underground

Interior

Interior Features	ensuite bathroom
Appliances	Dishwasher-Built-In, Microwave Hood Fan, Refrigerator, Stacked Washer/Dryer, Stove-Electric, Window Coverings
Heating	Fan Coil, Natural Gas
Fireplace	Yes
Fireplaces	Tile Surround
# of Stories	4
Stories	4
Has Basement	Yes
Basement	None, No Basement

Exterior

Exterior	Concrete, Stucco
Exterior Features	Back Lane, Corner Lot, Fenced, Landscaped, Low Maintenance Landscape, Paved Lane, Public Transportation, Schools, Shopping Nearby, View City, View Downtown, See Remarks
Roof	Roll Roofing

Construction	Concrete, Stucco
Foundation	Slab

Additional Information

Date Listed	April 18th, 2025
Days on Market	109
Zoning	Zone 12
Condo Fee	\$578

DATA IS DEEMED RELIABLE BUT IS NOT GUARANTEED ACCURATE BY THE REALTORS® ASSOCIATION OF EDMONTON. COPYRIGHT 2025 BY THE REALTORS® ASSOCIATION OF EDMONTON. ALL RIGHTS RESERVED.Trademarks are owned or controlled by the Canadian Real Estate Association (CREA) and identify real estate professionals who are members of CREA (REALTOR®, REALTORS®) and/or the quality of services they provide (MLS®, Multiple Listing Service®)

Listing information last updated on August 5th, 2025 at 11:47am MDT