

\$599,500 - 9 Resplendent Way, St. Albert

MLS® #E4423867

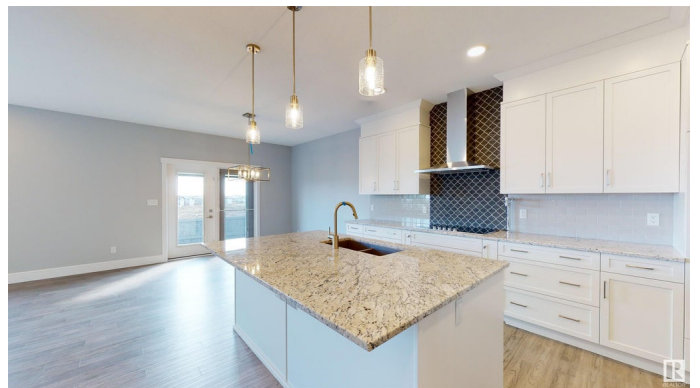
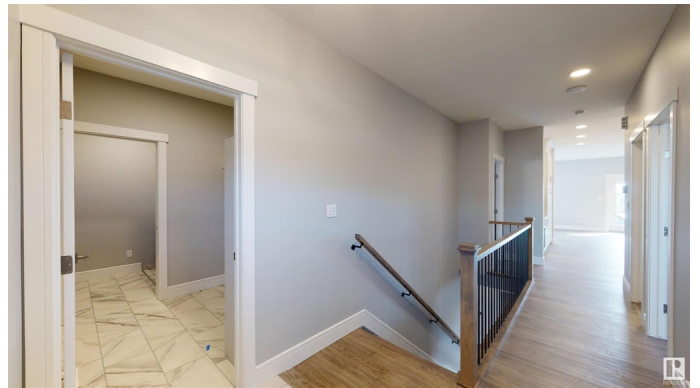
\$599,500

2 Bedroom, 2.00 Bathroom, 1,232 sqft

Single Family on 0.00 Acres

Riverside (St. Albert), St. Albert, AB

Step into elegance & comfort w/ this stunning bungalow designed w/ 9' ceilings on both the main floor & basement, creating a bright & spacious atmosphere. The chef's kitchen is the heart of the home, featuring S/S appliances, gorgeous cabinetry, quartz counters, centre island, & pantryâ€”perfect for culinary creativity. The living room, complete w/ fireplace, flows seamlessly into the dining area, making it an ideal space for gatherings & relaxation. Retreat to the luxurious primary suite, offering a spa like 4pc ensuite w/ double sinks, stand-up shower, & generous walk-in closet. A second bedroom, a 4pc bath, & main-floor laundry room provide the perfect blend of functionality & style. Built w/ exceptional craftsmanship & meticulous attention to detail, every Coventry home is backed by the Alberta New Home Warranty Program, ensuring lasting quality & peace of mind. *Home is under construction, photos are not of actual home, some finishings may vary, some photos virtually staged*



Built in 2024

Essential Information

MLS® # E4423867

Price \$599,500

Bedrooms 2

Bathrooms	2.00
Full Baths	2
Square Footage	1,232
Acres	0.00
Year Built	2024
Type	Single Family
Sub-Type	Detached Single Family
Style	Bungalow
Status	Active

Community Information

Address	9 Resplendent Way
Area	St. Albert
Subdivision	Riverside (St. Albert)
City	St. Albert
County	ALBERTA
Province	AB
Postal Code	T8N 8B2

Amenities

Amenities	Carbon Monoxide Detectors, Ceiling 9 ft., Detectors Smoke, Smart/Program. Thermostat, Vinyl Windows, HRV System, 9 ft. Basement Ceiling
Parking	Double Garage Attached

Interior

Interior Features	ensuite bathroom
Appliances	Dishwasher-Built-In, Microwave Hood Fan, Refrigerator, Stove-Electric
Heating	Forced Air-1, Natural Gas
Fireplace	Yes
Fireplaces	Mantel
Stories	1
Has Basement	Yes
Basement	Full, Unfinished

Exterior

Exterior	Wood, Stone, Vinyl
Exterior Features	Golf Nearby, Playground Nearby
Roof	Asphalt Shingles

Construction	Wood, Stone, Vinyl
Foundation	Concrete Perimeter

Additional Information

Date Listed	March 4th, 2025
Days on Market	58
Zoning	Zone 24

DATA IS DEEMED RELIABLE BUT IS NOT GUARANTEED ACCURATE BY THE REALTORS® ASSOCIATION OF EDMONTON. COPYRIGHT 2025 BY THE REALTORS® ASSOCIATION OF EDMONTON. ALL RIGHTS RESERVED.Trademarks are owned or controlled by the Canadian Real Estate Association (CREA) and identify real estate professionals who are members of CREA (REALTOR®, REALTORS®) and/or the quality of services they provide (MLS®, Multiple Listing Service®)

Listing information last updated on May 1st, 2025 at 2:47pm MDT