

\$65,500 - 161 Northbend Drive, Wetaskiwin

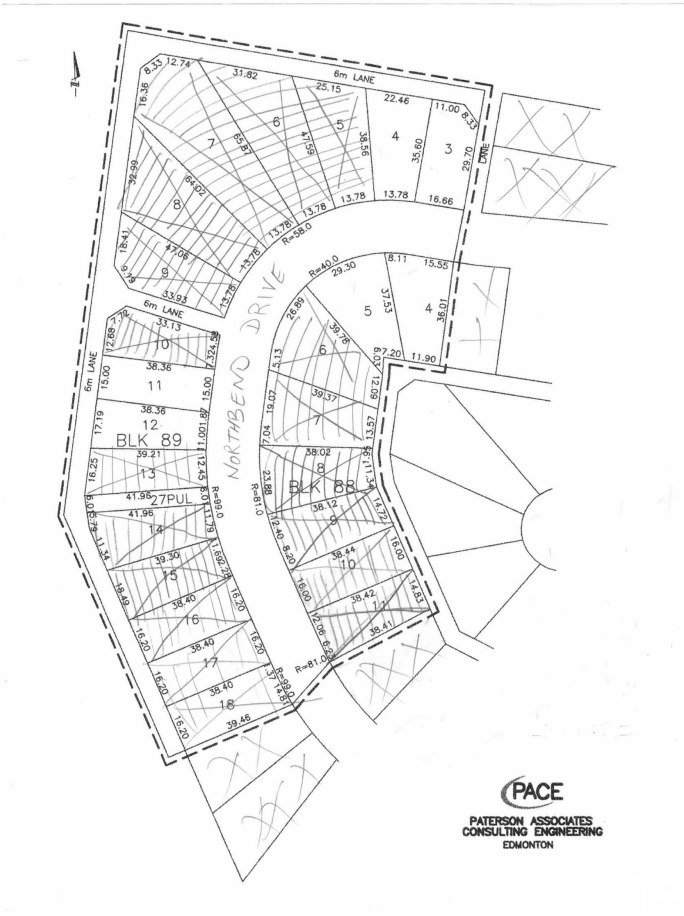
MLS® #E4325234

\$65,500

0 Bedroom, 0.00 Bathroom,
Single Family on 0.00 Acres

Northmount (Wetaskiwin), Wetaskiwin, AB

WOW, compare the price of this lot with other lots in this very well-planned subdivision! Build your new home in this quite well-established neighborhood or keep the lot as an investment. Beautiful neighborhood and you will love this quiet and perfect neighborhood. Within walking distance to Wetaskiwin Hospital and the new Alzheimer Centre point west; good access to downtown and highway; perfect location, backing onto green space; steps to access the vast walking and biking trail system in Wetaskiwin.



Essential Information

| | |
|-----------|-----------------|
| MLS® # | E4325234 |
| Price | \$65,500 |
| Bathrooms | 0.00 |
| Acres | 0.00 |
| Type | Single Family |
| Sub-Type | Vacant Lot/Land |
| Status | Active |

Community Information

| | |
|-------------|-------------------------|
| Address | 161 Northbend Drive |
| Area | Wetaskiwin |
| Subdivision | Northmount (Wetaskiwin) |
| City | Wetaskiwin |
| County | ALBERTA |

| | |
|-------------|---------|
| Province | AB |
| Postal Code | T9A 3N6 |

Exterior

Exterior Features Back Lane, Flat Site, Golf Nearby

Additional Information

Date Listed January 23rd, 2023

Days on Market 938

Zoning Zone 80

DATA IS DEEMED RELIABLE BUT IS NOT GUARANTEED ACCURATE BY THE REALTORS® ASSOCIATION OF EDMONTON. COPYRIGHT 2025 BY THE REALTORS® ASSOCIATION OF EDMONTON. ALL RIGHTS RESERVED.Trademarks are owned or controlled by the Canadian Real Estate Association (CREA) and identify real estate professionals who are members of CREA (REALTOR®, REALTORS®) and/or the quality of services they provide (MLS®, Multiple Listing Service®)

Listing information last updated on August 18th, 2025 at 9:02am MDT